

## 4 ARTÍCULOS CIENTÍFICOS

### 4.1 HISTORICAL SINGLE IMAGE-BASED MODELING: THE CASE OF GOBIERNA TOWER, ZAMORA (SPAIN)

**Resumen:** Las imágenes históricas con perspectiva han demostrado ser muy útiles para proporcionar adecuadamente un análisis dimensional de fachadas de edificios o, incluso generar una reconstrucción parcial a partir de imágenes rectificadas de todo el elemento. En este trabajo, se analiza el caso de la Torre de la Goberna (Zamora, España) a partir de un enfoque de modelado basado en una única fotografía antigua. En particular, aprovechando las ventajas de la perspectiva de la imagen la existencia de los tres puntos de fuga y las restricciones geométricas habituales (planeidad, ortogonalidad y paralelismo), se lleva a cabo el análisis dimensional y la reconstrucción parcial de un edificio histórico desaparecido. Los resultados fueron comparados con la verdad terreno de mediciones de existentes en un antiguo levantamiento topográfico, obteniendo discrepancias de aproximadamente un 1%.

**Palabras clave:** fotografías históricas; una sola imagen; puntos de fuga; edificios demolidos; perspectiva



Case Report

## Historical Single Image-Based Modeling: The Case of Gobierna Tower, Zamora (Spain)

Jesús Garcia-Gago <sup>1</sup>, Javier Gomez-Lahoz <sup>1</sup>, Javier Rodríguez-Méndez <sup>2</sup>  
and Diego González-Aguilera <sup>1,\*</sup>

<sup>1</sup> Department of Cartographic and Terrain Engineering, Polytechnic School of Avila, University of Salamanca, Hornos Caleros 50, Avila 05003, Spain; E-Mails: jesusmgg@usal.es (J.G.-G.); fotod@usal.es (J.G.-L.)

<sup>2</sup> Department of Construction and Agronomy, Architectural Area, Polytechnic School of Zamora, University of Salamanca, Avda. Cardenal Cisneros, 34, Zamora 49022, Spain; E-Mail: rodmen@usal.es

\* Author to whom correspondence should be addressed; E-Mail: daguilera@usal.es; Tel.: +34-920-353-500; Fax: +34-920-353-501.

Received: 17 November 2013; in revised form: 14 January 2014 / Accepted: 14 January 2014 / Published: 27 January 2014

---

**Abstract:** Historical perspective images have been proved to be very useful to properly provide a dimensional analysis of buildings façades or even to generate a pseudo-3D reconstruction based on rectified images of the whole structure. In this paper, the case of Gobierna Tower (Zamora, Spain) is analyzed from a historical single image-based modeling approach. In particular, a bottom-up approach, which takes advantage from the perspective of the image, the existence of the three vanishing points and the usual geometric constraints (*i.e.*, planarity, orthogonality, and parallelism) is applied for the dimensional analysis of a destroyed historical building. Results were compared with ground truth measurements existing in a historical topographical surveying obtaining deviations of about 1%.

**Keywords:** historical photographs; single image; vanishing points; demolished buildings; perspective

---

## 1. Introduction

Despite the high proliferation of three-dimensional scanning systems, which have revolutionized the data acquisition fashion, photogrammetry, and computer vision techniques, have evolved to offer powerful and friendly tools that can render virtual worlds that meet the most demanding expectations: high geometric accuracy on the points, high radiometric quality on the surfaces of the object, and an integrated environment where the user can interact and even play with the model or demand from its data base sophisticated information. In addition, historical buildings modeling through laser scanner become impossible when the structure does not exist or the whole building has been destroyed. In these cases, the problem increases since the building cannot be reconstructed from two or more images [1–3]. Trying to find a solution to these situations, several authors have proposed approaches and methods based on the single view geometry [4–8]. However, only a few have been focused on the case of demolished buildings modeling from historical photography [9–11]. This last aspect represents a hard task as the type and geometry of the camera is completely unknown and the accuracy assessment of the results is, sometimes, impossible due to the nonexistence of the building. In this sense, some authors have developed approaches for obtaining internal camera parameters from a single view [12,13] and to provide a quality control of the resulting model or dimensional analysis based on a controlled virtual camera embedded into a CAD (Computer Aided Design) environment [14].

This contribution relies on software, sv3DVision, developed in 2005 [4,15] at the University of Salamanca. The main aim that inspired the design of the program was to join the strength of the simplicity involved in the geometry-that guarantees that the user can easily get involved in the task-and the high performance expected on every highly automated approach. As a result, the hybrid method enables to extract and exploit the image information that leads to the determination of the object structure (through its vanishing points), besides the reliability provided by the application of robust estimators, M-type and RANSAC (see *infra*). Last but not least, the program provides a twofold aspiration: a *technical* one that should prove to be efficient on modeling different structures under a diversity of circumstances; and a *pedagogical* one based on a simulation background that should motivate students or researchers to keep going deeper on the topic.

Through the years, the software has been successfully tested on a variety of environments, such as architecture, forensic sciences, traffic scenes and engineering; it has been awarded by the ISPRS Organization and has been used in the teaching/learning of Cartographic Engineering. However, this is not the main motivation that has decided us to present this contribution, but rather the importance of using our work to preserve, enhance, and highlight the historical heritage of our community, Castilla-Leon.

This paper addresses the problem of single historical photography dimensional analysis and pseudo-3D modeling (see *infra* for an explanation of this term) of demolished buildings, focusing the case of study on the emblematic “Goberna Tower” located in Zamora (Spain). The proposed method is suitable for those regular structures, which contain several geometric constraints, such as planarity, orthogonality, and parallelism, and hold the three orthogonal principal directions (*i.e.*, three vanishing points). In fact, the key to success relies on a robust approach for vanishing points computation, which allows us to obtain more accurate results. To this end the paper has been organized as follows: after this introduction, Section 2 remarks the historical background around the “Goberna Tower” and its importance for the city of Zamora; Section 3 depicts briefly some basic theory about projective

geometry and vanishing points; Section 4 describes the method applied to the “Goberna Tower” putting special emphasis in the vanishing points computation method; a final section is devoted to put across the concluding remarks.

## 2. Historical Background

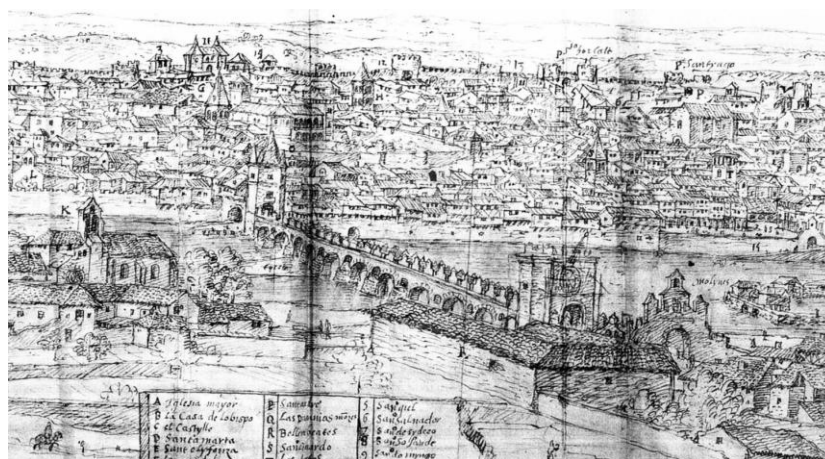
One of the most highlighted cases in lost buildings, that belonged to the architectural heritage of the city of Zamora (Spain) [16], is the demolition of the towers that characterized the Stone Bridge on the river Duero.

During its long-term presence, the Stone Bridge has undergone continuous transformations, transformations that have been necessary to reduce the devastating effects of the endemic swellings that knocked down the city slums.

At the end of the 19th century, its state was so worrisome that it was closed to the traffic and replaced upstream by another viaduct. Once the local authorities dealt with the construction of a new metallic bridge, also decided to recover the battered Stone Bridge. Between 1905 and 1908, Luis de Justo, Civil Engineer, designed and executed eleven projects that modified radically the appearance of the medieval bridge of Zamora, in addition to repairing it. Up to then, the Stone Bridge of Zamora displayed a similar configuration to the original one. Several documents show this fact, such as the View of Zamora by Anton van Wyngaerde (1570) (Figure 1), the plan by Blas de Vega (1820) [17], the photography of J. Laurent (c. 1870) (Figure 2), and, finally, the 1905 previous state plans by Luis de Justo. Sixteen pointed arches -one more than nowadays- laid out a 280-meter-long bridge, which leaned in fifteen foundations, finished off by cutwaters and lightened by spillways. Two towers controlled bridge crossing. The deck, straight guided and double downgrade ended, angled sharply towards the east to make difficult enemy assault, once surpassed the exit tower. The deck was finished off by 0.40 m wide parapets. At that moment, it was crowned by more than 300 battlements.

Over the cutwater of the previous tympanum to the angle, rose the tower of La Goberna, popularly known due the weather vane that topped it. Moreover, in Wyngaerde’s View or in Blas de Vega’s elevation, an initial door prevented parking on the deck during the night. In the other extreme, over the northern pier, an arc rose that opened the bridge by to the city.

**Figure 1.** Detail of the Stone Bridge of the Zamora city drawn by Antón van den Wyngaerden, in 1570.



**Figure 2.** Bridge over the Duero river in Zamora, photograph acquired by J. Laurent, in 1870. Photograph of the southern half (arcs 7–3).



Nothing remains today. After Luis de Justo rehabilitation, the slopes were modified and the spillways were extended, and even new ones were added. The works undertaken by the Department of Public Work between 1905 and 1907 [18] consisted of the demolition of towers, parapets, and tympanums to facilitate the later integral repair of the bridge. Thus, vaults were reviewed, tympanums were reconstructed, and new asphalt paved the existing surface. In the northern part, the arc was replaced with one roundabout, and, in the southern, in the angled stretch, the previous arc to the “Goberna Tower” was totally recovered. Fortunately, before disappearing, some of these architectures were documented with building survey, while others did so with photography. This is the case of the Stone Bridge that appears with its towers and doors, in several documents.

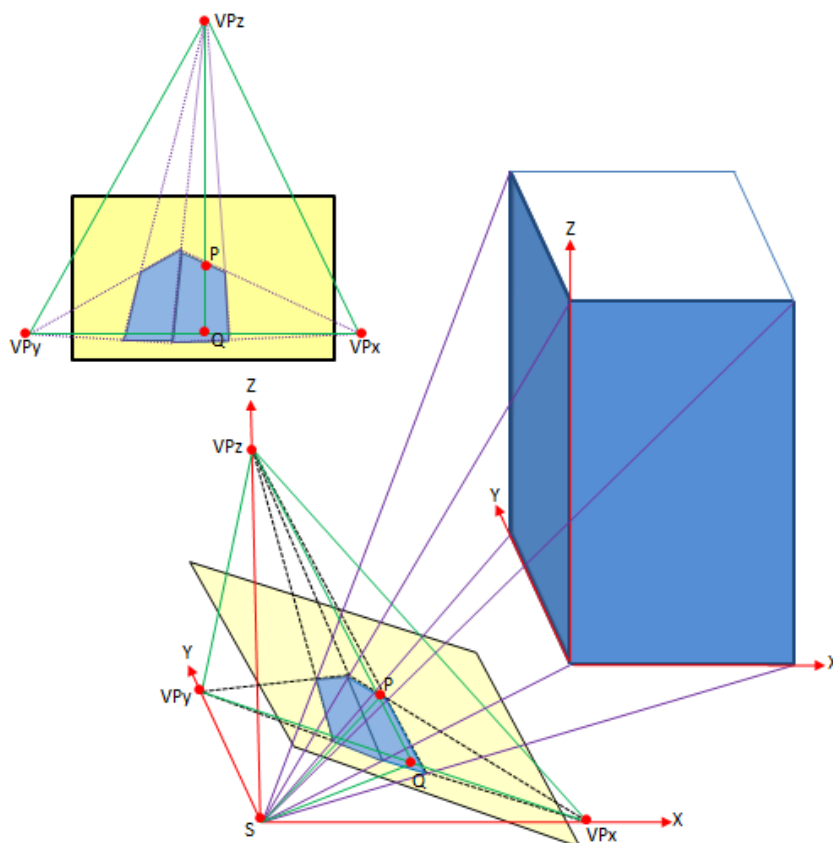
### 3. Theoretical Basis: Single View Photogrammetry

The vanishing points, ( $VP_x$ ,  $VP_y$ ,  $VP_z$ , see Figure 3) related to the perspective image of a box-like shape (like a building) contain information, both of the camera and of the image pose. Thus, the determination of these vanishing points can lead, firstly, to the determination of the interior and exterior orientation of the image and secondly, to the computation of the metric properties of any element pertaining to the faces of such a solid.

As can be seen from Figure 3, the intersections, from the point of view ( $S$ ), of the three directions ( $XYZ$ ) of the box with the image plane give the three vanishing points:  $VP_x$ ,  $VP_y$ , and  $VP_z$ , conforming a so-called perspective pyramid. The location of these points depends on: the focal length  $SP$ , with  $P$ , the principal point (the intersection of the image axis with the image plane), the horizontal angle  $QSP_x$  (horizontal angle of the camera axis with the main façade), and the vertical angle  $PSQ$  (angle of the camera axis with the vertical direction). As will be seen later, the angle that renders the rotation of the camera around its own axis (swing angle) can be derived from the angle of the horizon line with the edge of the image.

It can be seen that the principal point,  $P$ , is the orthocenter of the triangle  $VP_x$ ,  $VP_y$ ,  $VP_z$ , and that the position of the point of view can be derived easily once the previous parameters have been computed and a restriction from the object is provided (e.g., a known distance).

**Figure 3.** Vanishing point geometry:  $S$ , point of view;  $P$ , principal point; ( $VP_x$ ,  $VP_y$ ,  $VP_z$ ), vanishing points;  $VP_x$ ,  $VP_y$ , horizon line;  $PVP_z$ , maximum slope line;  $Q$ , intersection of the maximum slope and horizon lines.



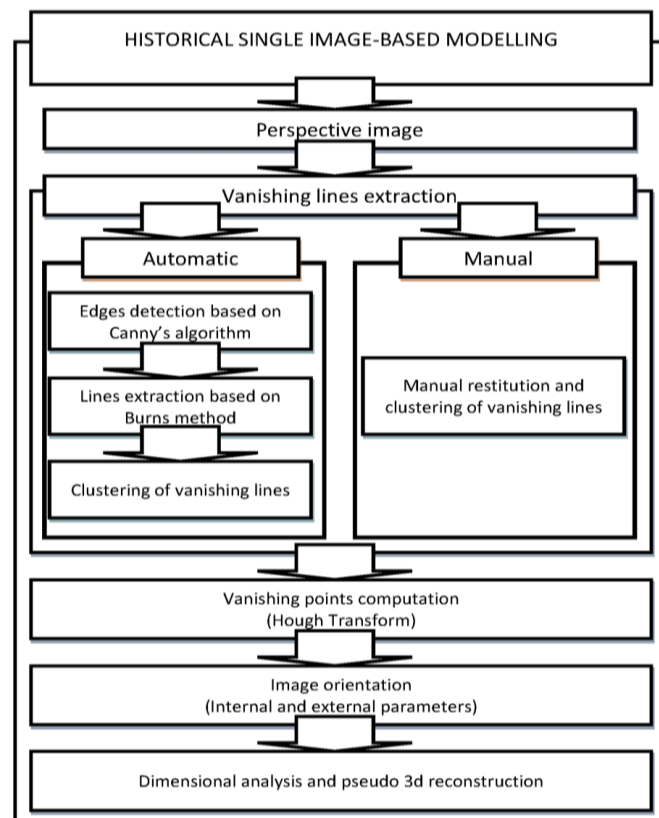
In any case, it can be seen that the first step is always to determine the position of the three vanishing points related to a certain building and this relies heavily on both the robustness of the pose configuration and on the ability of extracting straight lines from the image that intersect on each of the vanishing points. The quality of the process, as will be discussed later, thus, depends on the definition of the image lines and on the angle that each bundle of vanishing lines spans. From this, it can be seen that when the perspective angles are poor, the vanishing points are far away from the center of the image, decreasing, therefore, the reliability of the process.

#### 4. A Case Study: The Historical and Demolished “Goberna Tower”

The “Goberna Tower” together with its bridge was documented through several drawings, historical photographs and even with a topographical surveying performed by the engineer Luis de Justo in 1905. In particular, the most relevant documents correspond to Wygaerden [19] who performed some perspective drawings of the bridge with its tower, or the historical photographs of Laurent in 1870. In our case, different documents and perspective historical images have been analyzed in order to test the historical single image-based modeling approach (Figure 4). In addition, the topographical surveying, which contains a dimensional analysis of the tower has been considered as “ground truth” to assess the accuracy of the process.

The following figure (Figure 4) outlines the workflow developed:

**Figure 4.** Workflow developed for the historical single image-based modeling applied to the case study of the “Goberna Tower”.



#### 4.1. Data Processing

There are two ways of retrieving the metric information of the object from a single image: automatic and manual. The first one is always preferable when the image exhibits high quality (high-resolution and definition of the vanishing lines), when the ratio between correct observations (automatically extracted line segments) and mistaken observations (blunders derived from shadows, scars on the image, reflections, *etc.*) is above 4 (environ) and when the perspective geometry is strong enough. The second one is the alternative to weak cases in which these drawbacks are combined: low number of vanishing lines, poor quality image, high number of blunders, and poor perspective geometry.

The automatic approach is structured in three steps:

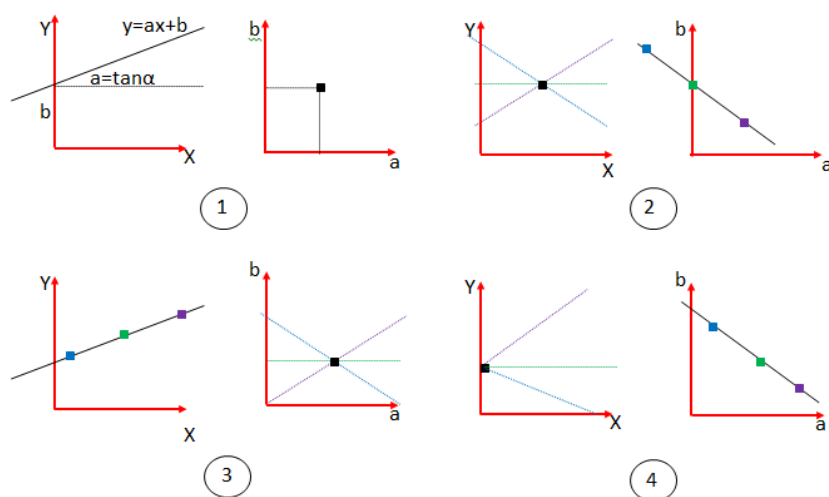
- (a) Extracting edge pixels by means of the Canny filter [20].
- (b) Clustering pixels into raster segments according to neighboring criteria and with length restrictions in a fashion very similar to the Burns Method [21].
- (c) Determining vector lines (first and last points) from raster segments according to a plane collinearity condition.

The output from these processes is the input in the following one: the determination of the vanishing points. Several methods of approaching this have been implemented [15]: minimization of the area of the triangle, modified Gaussian sphere, Tales theorem, modified Hough Transform, *etc.* In all of them, a central role is played by the RANSAC (RANDOM SAMPLE CONSENSUS) robust estimator [22] and its ability of determining and erasing blunders.



A whole set of possibilities have been applied to automatically process the target image but none of them has been successful due to the reasons outlined above. Thus, finally, the manual procedure was applied and even though there is really a very small set of lines, an acceptable result has been reached and this have been possible by the application of the modified Hough Transform Method, which is briefly described in the following lines:

**Figure 5.** Interpretation of several cases of the Hough Transform applied to straight lines. For each of the four cases, the Image Space is represented at the left and the Parameter Space is represented at the right. In the Image space, there can be seen: (1) A straight line; (2) A point; (3) A set of collinear points; (4) A vanishing point.



As is well known, the Hough Transform [23] deals with the relation between the space representation of some geometric feature (points, straight lines, circles, etc.) and the representation of its geometric parameters under the same Cartesian principles. For the following, we will focus on the problem we are trying to overcome: determining lines from pixels extracted on the image and determining vanishing points from these lines. The strength of the Hough Transform relies on the complete symmetry between points and lines. According to the conventional expression of a 2D straight line  $y = ax + b$ , the parameters to render a point  $(x,y)$  are exchangeable with the parameters to describe a line  $(a,b)$ . Thus a straight line in the image space is transformed to a point in the parameter space and *vice versa*, a point in the image space is transformed to a straight line in the parameter space (Figure 5).

This leads (at least) to the following series of consequences (Table 1):

**Table 1.** Different cases between image and parameter spaces for the Hough transform.

Case	Image Space	Parameter Space
1	A straight line	A point
2	A point (family of straight lines that intersect on a point)	A straight line (family of points that belong to a line)
3	A set of collinear points (that belong to the same line)	A set of lines that intersect on the same point
4	A vanishing point (set of lines that intersect on a point)	A set of collinear points (the straight line to which they belong represents the vanishing point)

The Hough procedure works by quantizing the image space, then extracting all information for every discrete cell, translating this information to the equivalent parameter space, and, finally, proceeding to some voting scrutiny to find out the relevant feature that meets the target criteria (The drawback related to the singularity of the parameter  $a$  when lines are close to verticality is overcome by tuning from the Cartesian  $(a,b)$  representation of the line to its polar  $(r,\alpha)$  expression).

To determine a vanishing point the procedure is as follows:

- (a) For every start and end point of every line segment rendered by the automatic or manual extraction, the correspondent line in the parameter space is computed and represented. Every cell that lies on the line receives one vote.
- (b) A voting procedure is undertaken so that the most visited cells give the lines that form families of lines that pass through each of the vanishing points.
- (c) For all these lines the correspondent parameters  $(a,b)_i$  are computed.
- (d) The best coordinates of each of the vanishing points are computed by applying a least squares criteria to the equation:  $y_0 = a_i x_0 + b_i$  in which  $(x_0, y_0)$  are the coordinates of a vanishing point.
- (e) In order to avoid residual outliers, a weighting procedure is applied to the above task, so that a robust M-estimator, modified Danish estimator [24] can be implemented and, thus, the blunders may be expelled from the computation and the reliability can be improved.

Once the coordinates of the three vanishing points are computed the interior and exterior orientation parameters are addressed from the perspective pyramid, built from these points plus the point of view (Figure 6c):

- (a) The orthocenter of the triangle formed by the three vanishing points ( $VP_x$ ,  $VP_y$ ,  $VP_z$ ) yields the principal point ( $P$ ) (Figure 6c).
- (b) The rotation angles  $(\theta, \nu)$  and the focal length ( $f$ ) can be derived from the following relations (Figure 6).

On the horizontal triangle (Figure 6a) formed by the point of view,  $S$ , and the horizontal vanishing points,  $VP_x$  and  $VP_y$ , the following relations hold Equation (1):

$$\begin{aligned} \tan \theta &= \frac{QVP_x}{SQ} = \frac{SQ}{QVP_y} \\ \tan \theta &= \sqrt{\frac{QVP_x}{QVP_y}} \end{aligned} \quad (1)$$

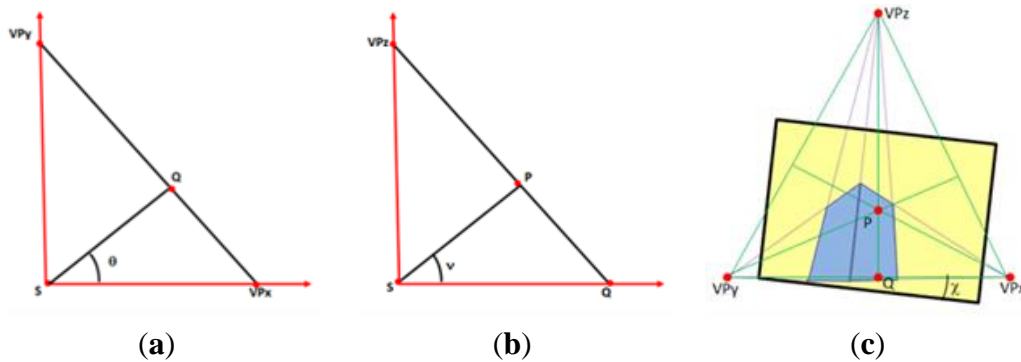
with  $SQ^2 = QVP_x \times QVP_y$  (in the horizontal triangle).

On the vertical triangle (Figure 6b) formed by the point of view,  $S$ , the vertical vanishing point  $VP_z$  and the intersection of the horizon and maximum slope lines,  $Q$ , the following relations hold Equation (2):

$$\tan \nu = \sqrt{\frac{PQ}{PVP_z}} \quad (2)$$

with  $f^2 = PQ \times PVP_z$  (in the vertical triangle).

**Figure 6.** (a) Horizontal triangle formed by the point of view,  $S$ , and the horizontal vanishing points  $VP_x$  and  $VP_y$ , with the azimuth angle ( $\theta$ ); (b) Vertical triangle formed by the point of view,  $S$ , the vertical vanishing point,  $VP_z$ , and the intersection of the horizon and maximum slope lines,  $Q$ , with the tilt angle ( $\nu$ ); (c) Perspective triangle formed by the three vanishing points ( $VP_x$ ,  $VP_y$ ,  $VP_z$ ) that contains the principal point ( $P$ ) as the intersection of the heights of the triangle and image showing the swing angle ( $\chi$ ) around the camera axis: the horizon line and the width image edges are not parallel (in addition, the maximum slope line and the height image edges are not parallel).



Finally, the swing angle (Figure 6c) can be computed from Equation (3):

$$\tan \chi = \frac{(Y_{VP_x} - Y_{VP_y})}{(X_{VP_x} - X_{VP_y})} \tag{3}$$

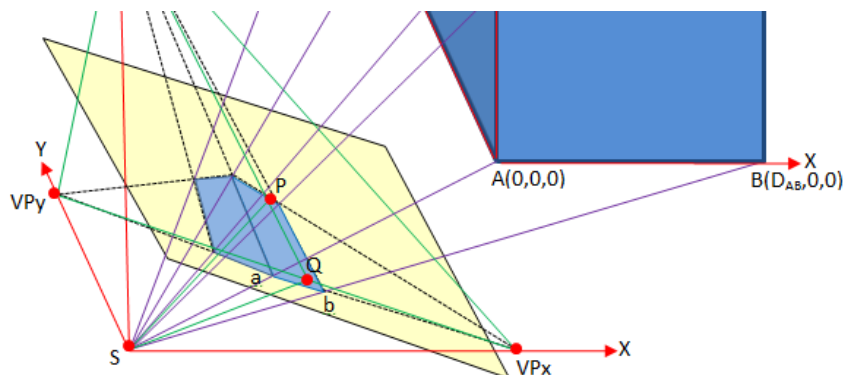
(c) Once these parameters are known, the coordinates of the point of view,  $S$ , can be easily derived by applying a certain restriction to the object (in addition to the point of view itself) and then solving from the collinearity equations (Figure 7). An example case is measuring a horizontal distance in the object and setting the origin of the Datum at one of these points. We can, thus, write six equations for five unknowns:  $(XYZ)_S$  and the two scale factors for each collinearity condition [25] Equation (4).

$$\begin{bmatrix} x_a - x_p \\ y_a - y_p \\ -f \end{bmatrix} = \lambda_{aA} \times R \times \begin{bmatrix} X_A - X_S \\ Y_A - Y_S \\ Z_A - Z_S \end{bmatrix} = -\lambda_{aA} \times R \times \begin{bmatrix} X_S \\ Y_S \\ Z_S \end{bmatrix} \tag{4}$$

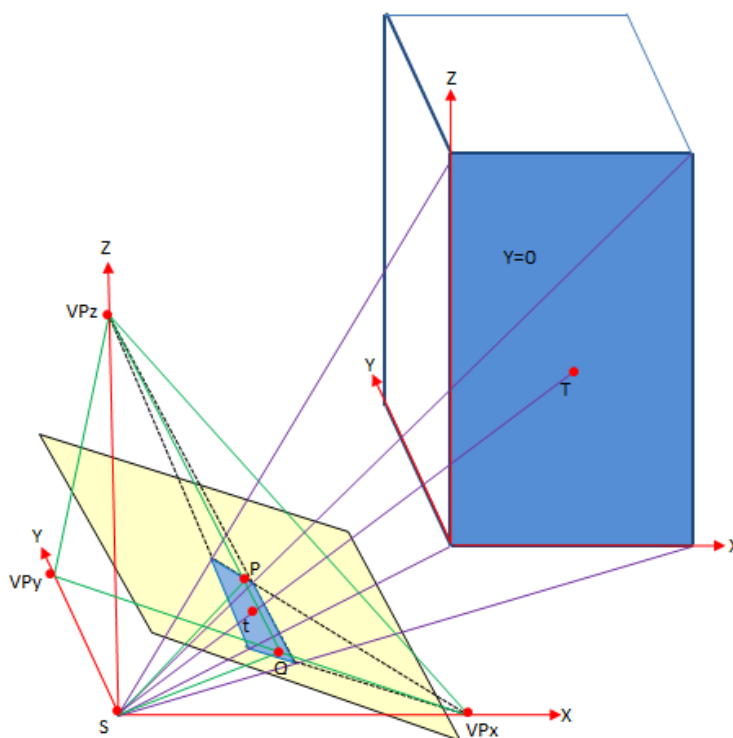
$$\begin{bmatrix} x_b - x_p \\ y_b - y_p \\ -f \end{bmatrix} = \lambda_{bB} \times R \times \begin{bmatrix} X_B - X_S \\ Y_B - Y_S \\ Z_B - Z_S \end{bmatrix} = -\lambda_{bB} \times R \times \begin{bmatrix} X_S - D_{AB} \\ Y_S \\ Z_S \end{bmatrix}$$

where  $x_a, y_a, x_b, y_b$  are the image coordinates of the ground points  $A$  and  $B$ , respectively, which define the Datum and the known horizontal distance  $D_{AB}$ ;  $x_p, y_p$  are the principal point,  $P$ , coordinates;  $R$  is the rotation matrix and  $X_s, Y_s, Z_s$  and  $\lambda_{aA}, \lambda_{bB}$  are the unknowns corresponding to the point of view,  $S$ , and the two scale factors, respectively.

**Figure 7.** The coordinates of the point of view,  $S$ , can be computed once the principal point ( $P$ ), focal length ( $f$ ), and rotation angles ( $\theta, \nu, \chi$ ) are known by proceeding to a Datum definition by which two imaged points ( $a$  and  $b$ ) receive two object coordinates:  $A(0,0,0)$  and  $B(D_{AB},0,0)$  and by means of the collinearity equations. In this case, the  $X$  coordinate of point  $B$ , that lies on  $X$  axis, is the measured distance between  $A$  and  $B$ .



**Figure 8.** Dimensional analysis on a plane (in this case  $Y = 0$ ) of the object and pseudo-3D modeling based on the rectification of the whole plane. The coordinates of any object point  $T$  can be computed from its image  $t$ , and the constraint  $Y_T = 0$ , by means of the collinearity equations.



Finally, once the interior and the exterior orientations are solved, the dimensional analysis process and the pseudo-3D modeling process are available (Figure 8). By pseudo-3D modeling we mean that the object facades can be rectified, that is, digitally transformed to eliminate any perspective effect and, furthermore, if two facades are related by a orthogonality condition, as is usually the case, a double rectification step can be applied, that is, from the two 2D documents linked to each other a 3D

document can be obtained by an orthogonality relation. If more photographs, containing other pair of (orthogonal) facades are available, this process could be extended to complete the four (orthogonal and parallel) faces of the object. Both the dimensional analysis and the pseudo-3D modeling procedures are based on the collinearity equations and both require the definition of a geometric constraint (*i.e.*, working plane) on the object. For example, we can work with the  $XZ$  plane for which the-planarity, verticality, and parallelism with  $XZ$  plane-constraint  $Y = 0$  is applied. Furthermore, we can also work with  $YZ$  plane for which the-planarity, verticality, and parallelism with  $YZ$  plane-constraint  $X = 0$  is applied. Obviously, both constraints imply an orthogonality relation between them. If more photographs, depicting other facades, were available, similar constraints could be applied to complete the whole building. Note that the scale factor could be propagated from the first image to the others although it would be highly convenient to measure more distances on the facades.

For any object point  $T$  (with  $Y_T = 0$ ), which is imaged on the photograph as  $t$ , we have Equation (5):

$$\begin{bmatrix} x_t - x_p \\ y_t - y_p \\ -f \end{bmatrix} = \lambda \times R \times \begin{bmatrix} X_T - X_S \\ Y_T - Y_S \\ Z_T - Z_S \end{bmatrix}; \quad \lambda^{-1} \times R^T \times \begin{bmatrix} x_t - x_p \\ y_t - y_p \\ -f \end{bmatrix} = \begin{bmatrix} X_T - X_S \\ -Y_S \\ Z_T - Z_S \end{bmatrix} \quad (5)$$

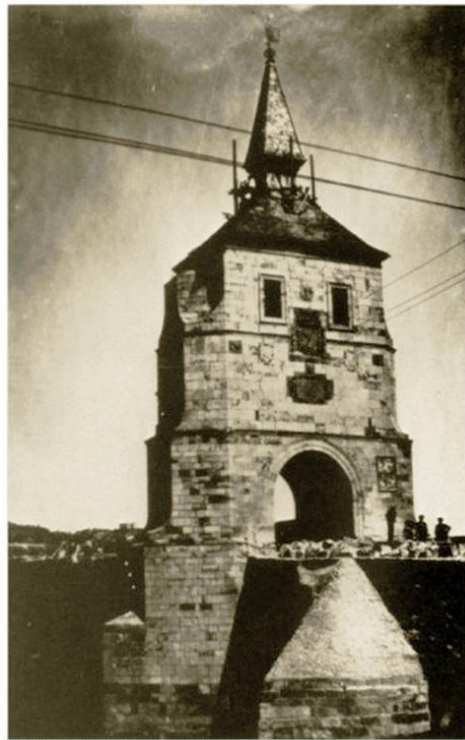
In addition, dividing the first and third equations by the second one and rearranging we get Equation (6):

$$\begin{aligned} X_T &= X_S - Y_S \frac{r_{11}(x - x_p) + r_{21}(y_t - y_p) + r_{31}f}{r_{12}(x - x_p) + r_{22}(y_t - y_p) + r_{13}f} \\ Z_T &= Z_S - Y_S \frac{r_{13}(x - x_p) + r_{23}(y_t - y_p) + r_{33}f}{r_{12}(x - x_p) + r_{22}(y_t - y_p) + r_{13}f} \end{aligned} \quad (6)$$

where all the terms at the right side of the equation are known. This can be applied to discrete points or in a scanning fashion to all the pixels that lie in the face related to the  $XZ$  plane and therefore, obtain the pseudo-3D model of the façade.

#### 4.2. Results

After analyzing more than ten images, the only historical photograph that properly worked presents a size of  $7.7 \times 12.18$  cm and is scanned with a pixel resolution of 150 dpi providing an image of  $455 \times 719$  pixels (Figure 9). The secret to success remains in the distance to the object (very close, around 70 m), as well as the well-defined perspective of the photograph towards the main three orthogonal directions. Furthermore, the selected photograph is based on the following hypotheses, as far as the building's geometry is concerned: (i) façades are planar geometric structures; (ii) lens distortion is not considered; (iii) façade edges are straight and constitute the input data of the described method; and (iv) the existence of constraints (parallelism, perpendicularity, and coplanarity) of building's edges and facades.

**Figure 9.** Historical photograph (1900) used for the single image-based modeling approach.

ZAMORA - Torre de la Gobernación (1900).

According to the proposed approach, the photograph is manually vectorized with lines clustered along the three main object directions ( $X, Y, Z$ ). As a result, the three main vanishing points ( $VP_x$ ,  $VP_y$ ,  $VP_z$ ) are computed, based on the robust Hough approach described above. The coordinates of these relevant points together with its RMSE (Root Mean Square Error), in pixel units, are outlined in Table 2. It should be noted the subpixel precision obtained.

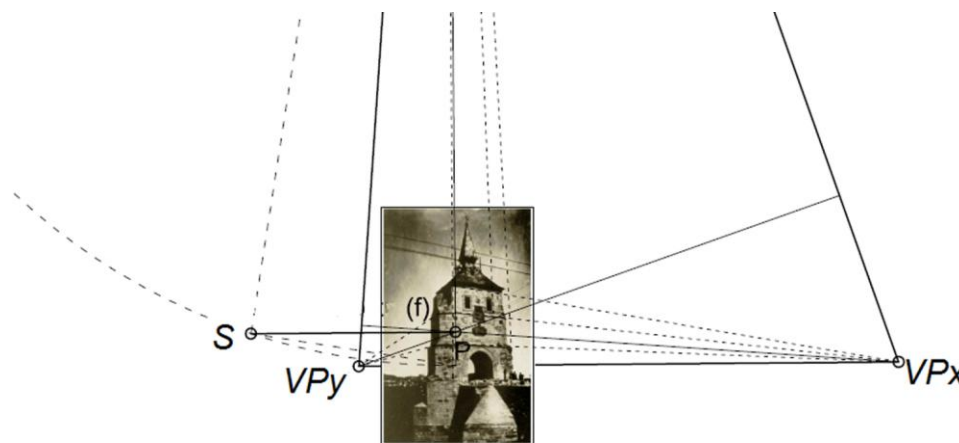
**Table 2.** Vanishing points coordinates and its errors.

Hough Transform + Danish Estimator: (units: pixels)	$VP_x$	$VP_y$	$VP_z$
$x$	2,253.8	-587.42	283.55
$y$	504.79	582.40	-7,425.58
RMSE	0.057	0.046	0.318

Computed the main structural components of the process, the geometric internal camera parameters, *i.e.*, focal length and principal point, are estimated based on the perspective pyramid construction (Figure 10) taking the three vanishing points as vertices. The principal point of the image ( $P$ ) is the orthocenter of this triangle, whereas the height of the pyramid corresponds to the focal length ( $f$ ). The solved internal geometry of the camera, the camera pose (*i.e.* orientation and position) is computed. The orientation of the camera ( $\theta, \nu, \chi$ ) is computed, based on the geometric relations developed in Equations (1–3), which establish a relationship between the orthogonal directions ( $X, Y, Z$ ) and the corresponding vanishing points ( $VP_x, VP_y, VP_z$ ), assuming the intrinsic geometric parameters of the camera known. For the spatial position ( $X, Y, Z$ )<sub>S</sub>, the user must introduce some known measurement of the building together with some geometric constraint in order to overcome the indetermination problem *i.e.*, it is not possible to compute indirectly the camera position only with one image. In our case, a known

horizontal distance (8.70 m) together with a coplanarity constraint ( $Y = 0$ ) was defined. This measure was extracted from the topographical surveying performed by the engineer Luis de Justo in 1905.

**Figure 10.** Perspective pyramid computed for the single image-based modeling approach. The vanishing points ( $VP_x$ ,  $VP_y$ ,  $VP_z$ ) constitute the base of the pyramid, whereas the point of view,  $S$ , and the focal length,  $f$ , are the vertex of the pyramid and its height, respectively.



The following table (Table 3) outlines the intrinsic and extrinsic parameters estimated for the unknown camera.

**Table 3.** Internal and external parameters of the unknown camera.

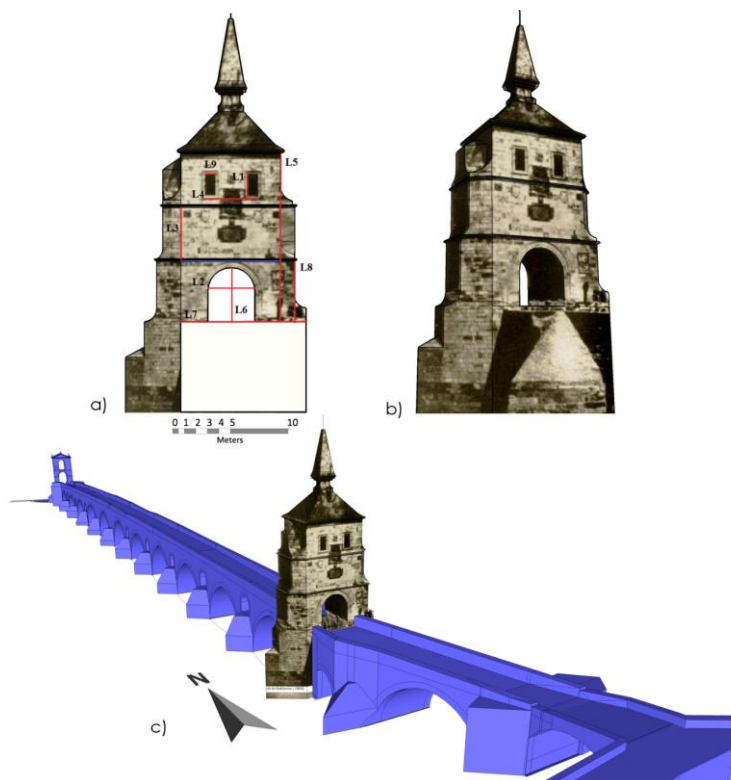
Internal Parameters (units: millimetres)		External Parameters (units: degrees, meters)	
$P [x]$ (mm)	25.29	$\theta$ : 38.114 °	$X_S$ : -29.71
$P [y]$ (mm)	65.40	$\nu$ : 105.5167 °	$Y_S$ : -60.18
$f$ (mm)	44.86	$\chi$ : 177.5282 °	$Z_S$ : -13.66

It should be noted, the more weakness along the  $Z$  axis in the vanishing points computations as the parallelism of the lines renders an intersection that is close to the infinite (Figure 10). This situation provides a weakness in this direction as the vanishing lines intersection contains more uncertainty along this vertical direction. This is confirmed in Table 2 with the worst RMSE obtained for the  $VP_z$ .

Again, from Table 3, it could be analyzed the weakness along  $Z$  direction since the vertical angle,  $\nu$ , does not provide enough perspective, only 5 ° above the horizontal. The swing angle reflects that the image has been taken in vertical position since the horizontal one is 90 °. However, this angle does not provide perspective and, thus, is not relevant for the vanishing points computation. The spatial camera position is relative with relation to the known horizontal distance defined by the user.

Fixed the camera pose, a dimensional analysis was performed based on distances. This process was performed using the collinearity condition constrained with some geometric clues, such as coplanarity, parallelism, or perpendicularity Equations (5) and (6). This dimensional analysis is outlined in Figure 11a and Table 4 together with its accuracy assessment. This quality control was performed based on the measurements existing on the topographical surveying executed by the engineer Luis de Justo in 1905. The discrepancies show an average relative error around 1%, included metric data inaccuracy.

**Figure 11.** (a) Dimensional analysis based on distances for the accuracy assessment; (b) Pseudo-3D model of the “Goberna Tower” obtained through the single image-based modeling approach; (c) Virtual 3D reconstruction that integrates the “Goberna Tower” in the Zamora Stone Bridge.



**Table 4.** Accuracy assessment: dimensional analysis of distances.

Code	Distances (m)	Discrepancies (m)	Code	Distances (m)	Discrepancies (m)
L1	1.84	$\delta_{L1} = 0.01$	L6	4.66	$\delta_{L6} = 0.04$
L2	4.08	$\delta_{L2} = 0.02$	L7	10.05	$\delta_{L7} = 0.04$
L3	4.40	$\delta_{L3} = 0.05$	L8	5.18	$\delta_{L8} = 0.02$
L4	4.45	$\delta_{L4} = 0.05$	L9	0.87	$\delta_{L9} = 0.03$
L5	14.38	$\delta_{L5} = 0.07$	Known Distance	8.70	$\delta_{KD} = 0.00$

Finally, a pseudo-3D model was generated based on the rectified facades computed geometrically from vanishing points, that is, using the collinearity equations supported by a geometric constraint (*i.e.*, working plane) on the object Equations (5) and (6). The result is showed in Figure 11b. Furthermore, in order to visualize this result integrated with its current state, a virtual recreation of the Stone Bridge with the “Goberna Tower” has been generated (Figure 11c).

### 5. Conclusions

When the lack of information is clearly due to the non-existence of the object of interest, such as historical demolished buildings, classical but solid perspective geometry statements can be of great utility, instead of advanced image processing techniques, especially in those cases in which only individual or single images exist. The main goal of this study was to provide a dimensional analysis



and even a pseudo-3D reconstruction of the demolished historical building “Goberna Tower” using single historical photographs. To this end, a single image-based modeling method has been developed and adapted to this specific case. The accuracy assessment results come to confirm that from a single view we can measure distances and areas and even to provide a simple 3D model with enough quality. The results obtained could be useful for the authorities of Zamora’s Council as they have been considering reconstructing the “Goberna Tower”. The monument would play an important touristic role but specially would meet a popular demand supported by social and cultural reasons which would be directly connected with the identity of Zamora’s society.

With relation to the workflow developed and the results obtained the main conclusions are the following:

- (a) Manual processing permits achieve better results than automatic processing. This is due to the weakness related to low number of vanishing lines, poor quality image, high number of blunders and poor perspective geometry.
- (b) Although robust estimators (especially RANSAC) have proven largely its efficiency in filtering gross errors, this is not the case. As just stated, when the image is poor both in geometry and radiometry, the automatic approach leads to an excessive number of blunders and so, the manual identification of vanishing lines is better.
- (c) An original vanishing point method based on the Hough Transform, which guarantees efficiency and quality in the results, even with unfavorable cases (a three-point perspective getting close to two-point perspective), has been successfully applied. Other methods to compute the vanishing points, such as the triangle area minimization or the Gaussian sphere, have not provided good results.
- (d) A relative error of 1% has been obtained for the accuracy assessment of the results. This value can be considered very good since the single image-based modeling approach developed involves many steps and thus the corresponding error propagation.
- (e) Finally, it should be remarked that the method is only applicable in scenes with strong geometric contents (*i.e.*, presence of structural planes and lines). In addition, the image must have perspective along the three main directions ( $X,Y,Z$ ) in order to compute the corresponding three vanishing points ( $VP_x,VP_y,VP_z$ ). Obviously, if these vanishing points are well defined more precision and reliability can be reached for the single image-based modeling approach.

### Author Contributions

All authors contributed extensively to the work presented in this paper.

### Conflicts of Interest

The authors declare no conflict of interest.

### References

1. Hartley, R.; Zisserman, A. *Multiple View Geometry in Computer Vision*; Cambridge University Press: Cambridge, UK, 2000; Volume 2.

2. Faugeras, O. *Three Dimensional Computer Vision: A Geometric Viewpoint*; The MIT Press: Cambridge, UK, 1993.
3. Zucchelli, M.; Santos-Victor, J.; Christensen, H.I. Pattern Recognition. In Proceedings of the IEEE 16th International Conference on Constrained Structure and Motion Estimation from Optical Flow, Québec City, QC, Canada, 11–15 August 2002; pp. 339–342.
4. Gonzalez-Aguilera, D.; Gomez-Lahoz, J. From 2D to 3D through modelling based on a single image. *Photogram. Record* **2008**, *23*, 208–227.
5. Debevec, P.E.; Taylor, C.J.; Malik, J. In Modeling and Rendering Architecture from Photographs: A Hybrid Geometry- and Image-Based Approach. In Proceedings of the SIGGRAPH, New Orleans, LA, USA, 4–9 August 1996; ACM: New Orleans, LA, USA; pp. 11–20.
6. Van den Heuvel, F.A. Automation in Architectural Photogrammetry: Line-Photogrammetry for the Reconstruction from Single and Multiple Images. Ph.D. Thesis, Delft University of Technology, Delft, The Netherlands, 2003.
7. Grammatikopoulos, L.; Karras, G.; Petsa, E. Camera Calibration Approaches Using Single Images of Man-Made Objects. In Proceedings of the XIX CIPA International Symposium, Antalya, Turkey, 30 September–4 October 2003; pp. 328–332.
8. Wilczkowiak, M.; Boyer, E.; Sturm, P. 3D Modeling Using Geometric Constraints: A Parallelepiped Based Approach. In Proceedings of the European Conference on Computer Vision, Copenhagen, Denmark, 28–31 May 2002; Volume IV, pp. 221–236.
9. Kalisperakis, I.; Rova, M.; Petsa, E.; Karras, G. On Multi-Image Reconstruction from Historic Photographs. In Proceedings of the XIX CIPA International Symposium, Antalya, Turkey, 30 September–4 October 2003; pp. 216–219.
10. Styliadis, A.D.; Sechidis, L.A. Photography-based façade recovery & 3-D modeling: A cad application in cultural heritage. *J. Cult. Herit.* **2011**, *12*, 243–252.
11. Georgoula, O.; Stamnas, A.; Patias, P.; Georgiadis, C.; Frangkoulidou, V. Historical coastal urban landscapes digital documentation and temporal study with 2d/3d modeling functionality: The case of Thessaloniki, Greece. *J. Cult. Herit.* **2012**, *14*, 396–402.
12. Gonzalez-Aguilera, D.; Gomez-Lahoz, J.; Rodriguez-Gonzalvez, P. An automatic approach for radial lens distortion correction from a single image. *IEEE Sens. J.* **2011**, *11*, 956–965.
13. Caprile, B.; Torre, V. Using vanishing points for camera calibration. *Int. J. Comput. Vis.* **1990**, *4*, 127–139.
14. Styliadis, A.D. Historical photography-based computer-aided architectural design: Demolished buildings information modeling with reverse engineering functionality. *Autom. Constr.* **2008**, *18*, 51–69.
15. Gonzalez-Aguilera, D. Reconstrucción 3D a Partir de una Sola Vista. Ph.D. Theses, University of Salamanca, Salamanca, Spain, 2005.
16. Piñuela Ximenez, A. *Descripción Histórica de la Ciudad de Zamora, su Provincia y Obispado*; Diputación de Zamora, Instituto de Estudios Zamoranos “Florián de Ocampo”: Zamora, España, 1987.
17. Chás Navarro, P.; Abad Balboa, T. *Los Caminos y la Construcción del Territorio en Zamora: Catálogo de Puentes*; Ministerio de Fomento, Diputación de Zamora, Instituto de Estudios Zamoranos “Florián de Ocampo”: Zamora, España, 2004.

18. Rodríguez Méndez, F.J.; Andrés Rodrigo, H.; Rubio Cavero, M.P.; García Gago, J.M. El Puente Medieval de Zamora a Comienzos del Siglo XX. Un Estudio del Alcance de la Intervención del Ingeniero Luis de Justo. Anuario 2009 Instituto de Estudios Zamoranos Florián de Ocampo, Zamora, España. 2012; Vol. 26, pp. 227–268. Available online: <http://www.iezfloriandeocampo.com/?id=17&idn=54&titulo=Colecci%F3n%20Anuarios> (accessed on 21 January 2014) (In Spanish).
19. Kagan, R.L. *Ciudades del Siglo de oro: Las Vistas Españolas de Anton. van den Wyngaerde*; Ediciones El Viso: Madrid, España, 1986.
20. Canny, J. A computational approach to edge detection. *IEEE Trans. Pattern Anal. Mach. Intell.* **1986**, *8*, 679–698.
21. Burns, J.B.; Hanson, A.R.; Riseman, E.M. Extracting straight lines. *IEEE Trans. Pattern Anal. Mach. Intell.* **1986**, *8*, 425–455.
22. Fischler, M.A.; Bolles, R.C. Random sample consensus: A paradigm for model fitting with applications to image analysis and automated cartography. *Commun. ACM* **1981**, *24*, 381–395.
23. Hough, P.V.C. Method and Means for Recognizing Complex Patterns. US Patent No. 3,069,654. 18 December 1962.
24. Domingo-Preciado, A. Investigación Sobre los Métodos de Estimación Robusta Aplicados a la Resolución de los Problemas Fundamentales de la Fotogrametría. Ph.D. Theses, University of Cantabria, Santander, Spain, 2000.
25. Kraus, K. *Photogrammetry (Volume 1)*; Dümmler Verlag: Bonn, Germany, 1993.

© 2014 by the authors; licensee MDPI, Basel, Switzerland. This article is an open access article distributed under the terms and conditions of the Creative Commons Attribution license (<http://creativecommons.org/licenses/by/3.0/>).