

## RECOMMENDER SYSTEMS BASED ON HYBRID MODELS

Alberto RIVAS; Pablo CHAMOSO; Alfonso GONZÁLEZ-BRIONES

*BISITE Research Group, University of Salamanca. Edificio I+D+i, Calle Espejo 2, 37007. Salamanca, Spain.*

*Air Institute, IoT Digital Innovation Hub (Spain), Calle Segunda 4, 37188, Salamanca, Spain.*

rivis@usal.es; chamoso@usal.es; alfonsogb@usal.es

**ABSTRACT:** Recommender Systems (RSs) play a very important role in web navigation, ensuring that the users easily find the information they are looking for. Today's social networks contain a large amount of information and it is necessary that they employ mechanism that will guide users to the information they are interested in. However, to be able to recommend content according to user preferences, it is necessary to analyse their profiles and determine their preferences. The present study presents the work related to different recommender systems focused on two different hybrid models. Both of them are using a Case-Based Reasoning (CBR) system combined with the training of an Artificial Intelligence (AI) algorithm. First, some information is analyzed and trained with an AI algorithm in order to determine relevant patterns hidden on the information. Then, the CBR system extends the system using a series of metrics and similar past cases to decide whether the recommendation is likely to be recommended to a user. Finally, the last step on the CBR is to propose recommendations to the final user, whose job is to validate or reject the proposal feeding the cases database.

**KEYWORDS:** Recommender Systems; Artificial Intelligence; Case-Based Reasoning; Social Networks.

## 1 Introduction

The role social networks play in our daily lives is probably greater than we realize. We often see them as simple communication and content-sharing

tools, those, of course, are their main functions. However, social networks have come to be much more than that; they customize advertisements to suit our tastes and they even help us find a job [4]. Social networks provide such advanced features thanks to the collection and analysis of the data users generate on the Internet [1] [5]. Career-oriented social networks enjoy a particularly high success rate, some well-known platforms include Monster, XING, LinkedIn or beBee [2]. Following a different approach, a recommender system can be designed and developed using the information obtained from Virtual Learning Environments (VLEs). According to the information gathered, a platform like Moodle can be modified in order to give recommendations to their students [10-21]. In the next sections two case studies are described. The first case is a work related to social networks in which individual job recommendations are given based on the preferences and the profile of a particular user on social networks. The second case is using data from a VLE platform, and the main goal is study the variables to determine the principal factors that affect to the final results of students [22-33].

## 2 Job offer recommender system

The research presented in this case study focuses on a relationship recommendation system for a business and employment-related social network called beBee [6]. On beBee, companies and users share content, and users search for and apply to the published job offers. Therefore, in the case of this social network, the recommender system will not only serve for connecting similar user profiles but also for providing work related suggestions to users and companies.

For this purpose, we identify different factors that could be extracted from the information provided by users and we analyzed the information found in the published job offers. One of the challenges that we had to address was the extraction of information, since the required information is often not available or it is not properly structured. Thus, it was necessary to apply text mining and information extraction techniques in order to evaluate possible ties between users as well as users and job offers [34-47].

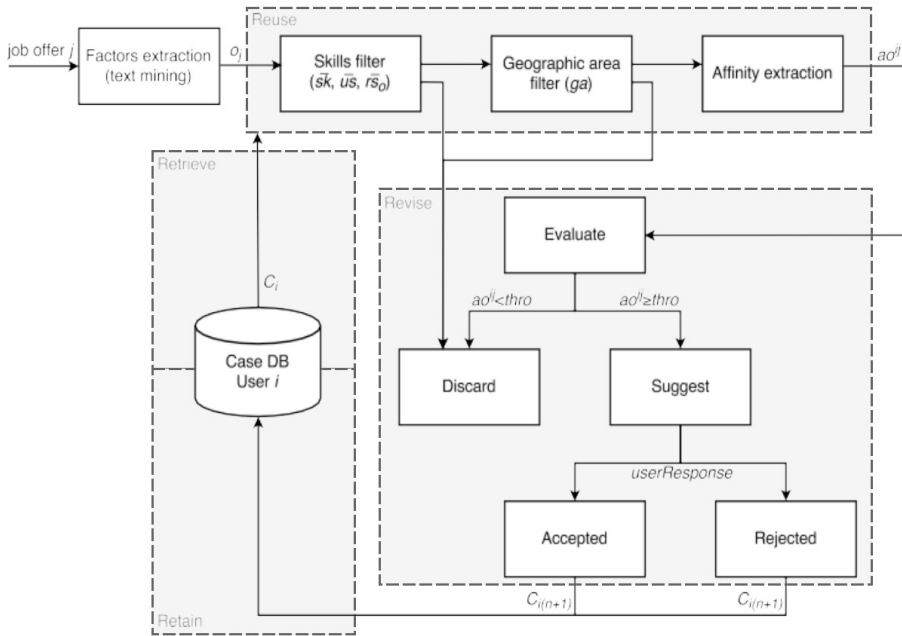


Figure 1. Job offer recommendation system flowchart and CBR parts.

These techniques ensure that the job offers recommended to users, correspond to the information provided in their profile; they possess the skills required by the offer, they have been previously interested in similar offers, etc. However, the use of these techniques does not guarantee that the offer suggested by the system, satisfies all user expectations.

To provide accurate suggestions, it is important to analyze the reasons for which a particular user could reject or accept a suggestion. To do such an analysis, it is necessary to employ techniques such as case-based reasoning (CBR), which allows to feedback the system with information on previous cases [7]. CBR is a problem solving methodology and its use in this project is essential since it will allow the recommender system to learn and improve over time by re-using similar past experiences which are stored in cases. The one proposed in the case study follows the flow described in the Figure 1.

To evaluate the proposed system it has been divided into two parts: user-user relationships and user-job offer relationships. Different

subsets of real and active users, as well as recently published job offers, have been selected to gather information for this evaluation. The results obtained in this evaluation are satisfactory [48-56].

### 3 Resources recommender system based on the students performance

The objective of this case of study is to give some recommendations to the students aiming for increase exam pass rate through the evaluation of an automatic learning model and its subsequent improvement. The system proposed in Figure 2 has been designed for this purpose; an Artificial Neural Network (ANN) is trained with data in order to make it capable of identifying patterns of behaviour. Subsequently, the initial data set is analyzed and the parameters that contribute to students failing their exams are minimized to increase the pass rate. Finally, the already trained network is used in order to predict if with the modifications made in the parameters are going to help students to pass their exams.

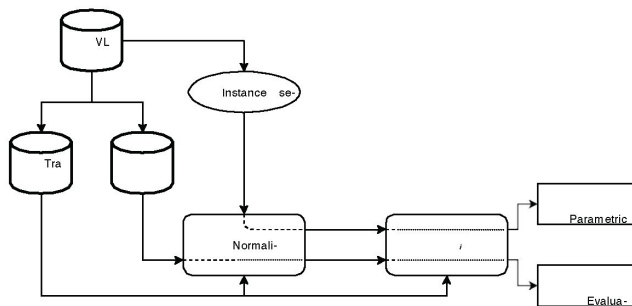


Figure 2. System workflow.

Due to data protection, the processing of data may be a complicated process, as a result, it was decided to work and apply a set of public data that can be accessed at [3]. The dataset contains a group of students who have participated in a series of four online courses, resulting in a total of 32, 593 students. It includes the students' personal data such as their identification code, the students' gender, region, educational level, age range, neighborhood crime rate (IMD), number of times they have previously participated in the course, enrolled credits, disability and the

final exams result (passed/failed) [57-67]. In addition, the number of times the student clicked on any of the online course contents has been counted throughout the course.

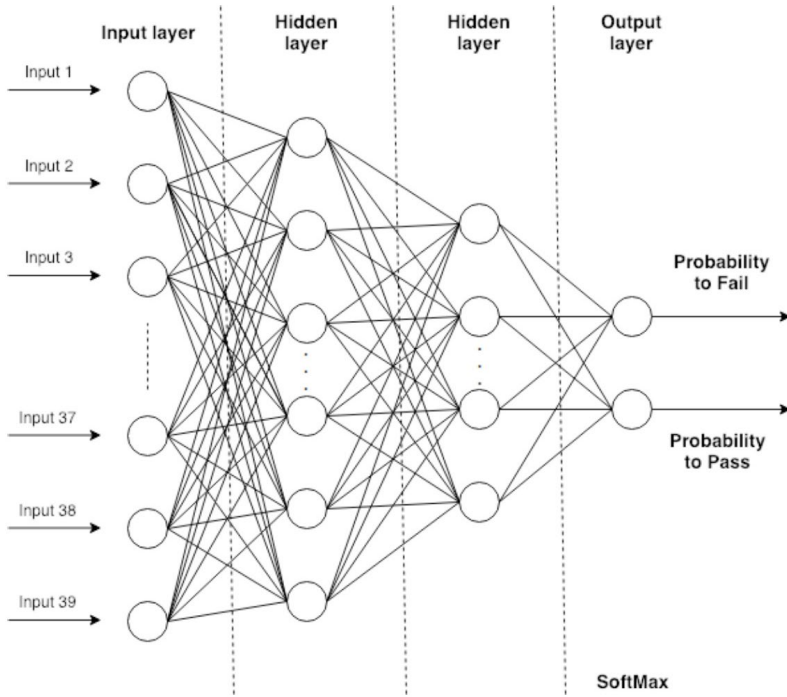


Figure 3. Design of the multilayer perceptron.

About the ANN, the proposed system architecture is based on a multilayer perceptron (MLP) with up to two hidden layers with a previously fixed size, as shown in Figure 3. The activation function of the neurons in the hidden layer is selected among three choices: the Rectified Linear Unit function,

$$relu(z) = \max(0, z) \tag{1}$$

the logistic sigmoid function, and the hyperbolic tangent function,  $\tanh$ . The procedure for choosing these hyperparameters of the network, such as the number of neurons in the hidden layers or the activation function, a 5-fold cross validation procedure was carried in the

training set. The mean accuracy is then used to compare the different network topologies [68-75].

Apart from those hidden layers, the input layer has as many neurons as there are inputs in the data set, while the output layer has 2 neurons with a SoftMax activation function, ideal for classification problems as it scales actual values in the range of [76-86]. The first neuron in the output layer is the probability that a student is going to fail, while the second is the probability that a student is going to pass the course.

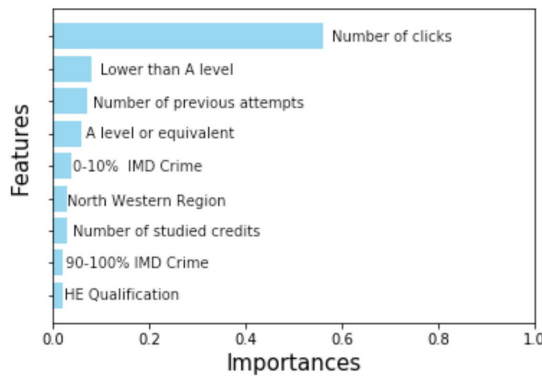


Figure 4. Weight of parameters

The logarithmic loss has been used to optimize the weights of the network, providing a more nuanced view into its performance than the accuracy. To minimize the processing costs of the algorithm, an optimization method has been leveraged. Specifically, the Adam optimizer [8] designed to train Deep Neural Networks, has been used with 500 epochs and a batch size of 30.

Regarding the results, it can be seen that the user intersection with the contents displayed in the VLE is really significant as Figure 4 shows, being the number of click the most important feature amongst the other ones. Based on this study, next step will be to study the resources available in the platform in order to figure out the most relevant ones for each user [176]. Once this study will be done, the most interesting aspect to include is to display better positioned in the VLE the most important resources to facilitate the final user the interaction with them.

## References

1. Serrat, O. (2017). Social network analysis. In Knowledge solutions (pp. 39-43). Springer, Singapore.
2. beBee, la plataforma colaborativa para profesionales. (2019). Retrieved 2 December 2019, from <https://www.bebee.com/es/>
3. Open University Learning Analytics dataset. (n.d.). Retrieved from [https://analyse.kmi.open.ac.uk/open\\_dataset](https://analyse.kmi.open.ac.uk/open_dataset).
4. González-Briones, A., Rivas, A., Chamoso, P., Casado-Vara, R., & Corchado, J. M. (2018, June). Case-based reasoning and agent based job offer recommender system. In The 13th International Conference on Soft Computing Models in Industrial and Environmental Applications (pp. 21-33). Springer, Cham.
5. Lima, A.C.E.S., De Castro, L.N., Corchado, J.M. (2015) A polarity analysis framework for Twitter messages, Applied Mathematics and Computation, 270, pp. 756-767.
6. Chamoso, P., Rivas, A., Rodríguez, S., & Bajo, J. (2018). Relationship recommender system in a business and employment-oriented social network. Information sciences, 433, 204-220.
7. Chamoso, P., Gonzalez-Briones, A., Rivas, A., De La Prieta, F., & Corchado, J.
8. M. (2019). Social computing in currency exchange. Knowledge and Information Systems, 1-21.
9. Kingma, D. P., & Ba, J. (2014). Adam: A method for stochastic optimization. arXiv preprint arXiv:1412.6980.
10. De Melo, Maximilian Jaderson, et al. «Robust and adaptive chatter free formation control of wheeled mobile robots with uncertainties.» ADCAIJ: Advances in Distributed Computing and Artificial Intelligence Journal 7.2 (2018): 27-42.
11. Ribeiro, Catarina, et al. «Customized normalization clustering methodology for consumers with heterogeneous characteristics.» ADCAIJ: Advances in Distributed Computing and Artificial Intelligence Journal 7.2 (2018): 53-69.
12. Becerril, Anahiby Anyel. «The value of our personal data in the Big Data and the Internet of all Things Era.» ADCAIJ: Advances in Distributed Computing and Artificial Intelligence Journal 7.2 (2018): 71-80.
13. Garcia, Ana Cristina Bicharra, & Adriana Santarosa Vivacqua. «ACoPla: a Multiagent Simulator to Study Individual Strategies in Dynamic Situations.» ADCAIJ: Advances in Distributed Computing and Artificial Intelligence Journal 7.2: 81-91.

14. Casado-Vara, R., Novais, P., Gil, A. B., Prieto, J., & Corchado, J. M. (2019). Distributed continuous-time fault estimation control for multiple devices in IoT networks. *IEEE Access*, 7, 11972-11984.
15. Jörg Bremer, Sebastian Lehnhoff. (2017) Decentralized Coalition Formation with Agent-based Combinatorial Heuristics. *ADCAIJ: Advances in Distributed Computing and Artificial Intelligence Journal* (ISSN: 2255-2863), Salamanca, v. 6, n. 3
16. Rafael Cauê Cardoso, Rafael Heitor Bordini. (2017) A Multi-Agent Extension of a Hierarchical Task Network Planning Formalism. *ADCAIJ: Advances in Distributed Computing and Artificial Intelligence Journal* (ISSN: 2255-2863), Salamanca, v. 6, n. 2
17. Enyo Gonçalves, Mariela Cortés, Marcos De Oliveira, Nécio Veras, Mário Falcão, Jaelson Castro (2017). An Analysis of Software Agents, Environments and Applications School: Retrospective, Relevance, and Trends. *ADCAIJ: Advances in Distributed Computing and Artificial Intelligence Journal* (ISSN: 2255-2863), Salamanca, v. 6, n. 2
18. Eduardo Porto Teixeira, Eder M. N. Goncalves, Diana F. Adamatti (2017). Ulises: A Agent-Based System For Timbre Classification. *ADCAIJ: Advances in Distributed Computing and Artificial Intelligence Journal* (ISSN: 2255-2863), Salamanca, v. 6, n. 2
19. Lucas Fernando Souza de Castro, Gleifer Vaz Alves, André Pinz Borges (2017). Using trust degree for agents in order to assign spots in a Smart Parking. *ADCAIJ: Advances in Distributed Computing and Artificial Intelligence Journal* (ISSN: 2255-2863), Salamanca, v. 6, n. 2
20. Aversa, R., Petrescu, R. V., Akash, B., Bucinell, R., Corchado, J., Berto, F., ... & Petrescu, F. I. (2017). Kinematics and forces to a new model forging manipulator. *American Journal of Applied Sciences*, 14(1), 60-80.
21. Li, T., Sun, S., Bolić, M., & Corchado, J. M. (2016). Algorithm design for parallel implementation of the SMC-PHD filter. *Signal Processing*, 119, 115-127.
22. Corchado, J. M., Aiken, J., Corchado, E. S., & Fdez-Riverola, F. (2005). Evaluating the air-sea interactions and fluxes using an instance-based reasoning system. *AI Communications*, 18(4), 247-256.
23. Costa, Â., Novais, P., Corchado, J. M., & Neves, J. (2011). Increased performance and better patient attendance in an hospital with the use of smart agendas. *Logic Journal of IGPL*, 20(4), 689-698.
24. Rodríguez, S., de La Prieta, F., Tapia, D. I., & Corchado, J. M. (2010, June). Agents and computer vision for processing stereoscopic images. In *International*



- Conference on Hybrid Artificial Intelligence Systems (pp. 93-100). Springer, Berlin, Heidelberg.
25. Corchado, J. M., Corchado, E. S., & Pellicer, M. A. (2004, September). Design of cooperative agents for mobile devices. In *International Conference on Cooperative Design, Visualization and Engineering* (pp. 205-212). Springer, Berlin, Heidelberg.
  26. Corchado, J. M., Laza, R., Borrajo, L., Yáñez, J. C., De Luis, A., & Gonzalez-Bedia, M. (2003, July). Agent-based web engineering. In *International Conference on Web Engineering* (pp. 17-25). Springer, Berlin, Heidelberg.
  27. Fdez-Riverola, F., & Corchado, J. M. (2003). Forecasting red tides using an hybrid neuro-symbolic system. *AI Communications*, 16(4), 221-233.
  28. González-Briones, A., Prieto, J., De La Prieta, F., Herrera-Viedma, E., & Corchado, J. (2018). Energy optimization using a case-based reasoning strategy. *Sensors*, 18(3), 865.
  29. Díaz, F., Fdez-Riverola, F., Glez-Peña, D., & Corchado, J. M. (2006, September). Using fuzzy patterns for gene selection and data reduction on microarray data. In *International Conference on Intelligent Data Engineering and Automated Learning* (pp. 1087-1094). Springer, Berlin, Heidelberg.
  30. Koetsier, J., Corchado, E., MacDonald, D., Corchado, J., & Fyfe, C. (2004, June). Kernel maximum likelihood hebbian learning. In *International Conference on Computational Science* (pp. 650-653). Springer, Berlin, Heidelberg.
  31. Pavón, J., & Corchado, J. (2004). Agents for the web. *International journal of Web engineering and technology*, 1(4), 393-396.
  32. Fdez-Riverola, F., Díaz, F., Borrajo, M. L., Yáñez, J. C., & Corchado, J. M. (2005, August). Improving gene selection in microarray data analysis using fuzzy patterns inside a cbr system. In *International Conference on Case-Based Reasoning* (pp. 191-205). Springer, Berlin, Heidelberg.
  33. Fernández-Riverola, F., & Corchado, J. M. (2003, November). Employing task fuzzy models to automate the revision stage of a cbr system. In *Conference on Technology Transfer* (pp. 302-311). Springer, Berlin, Heidelberg.
  34. Corchado, J. M., & Aiken, J. (1998). Expert system for modelling water masses. In *WORKSHOP ON DATA MINING. GLASGOW, SCOTLAND*.
  35. Corchado, J. M., & Aiken, J. (1998). Neuro-symbolic reasoning for real time oceanographic problems. In *CONFERENCE ON DATA MINING. IEE, SAVOY PLACE, LONDON*.
  36. Corchado, J. M. (1998). Models for integrating artificial intelligence approaches. *DOCTORAL CONSORTIUM ON KNOWLEDGE DISCOVERY AND DATA MINING. PAISLEY, UK*.

37. Borrajo, M. L., Corchado, J. M., Yáñez, J. C., Fdez-Riverola, F., & Díaz, F. (2005, August). Autonomous internal control system for small to medium firms. In *International Conference on Case-Based Reasoning* (pp. 106-121). Springer, Berlin, Heidelberg.
38. Fdez-Riverola, F., Díaz, F., & Corchado, J. M. (2004, November). Applying rough sets reduction techniques to the construction of a fuzzy rule base for case based reasoning. In *Ibero-American Conference on Artificial Intelligence* (pp. 83-92). Springer, Berlin, Heidelberg.
39. Corchado, J., & Lees, B. (1998). Case based reasoning opportunities and technologies. In *CONFERENCE ON KNOWLEDGE DISCOVERY. IEE, SAVOY PLACE, LONDON.*
40. Corchado, J., & Lees, B. (1998). Artificial neural networks in pattern recognition: multicollinearity and heterocedasticity. In *COLLOQUIUM ON KNOWLEDGE DISCOVERY. LONDON, UK.*
41. Corchado, J., & Lees, B. (1998). An overview of intelligent frameworks. In *COLLOQUIUM ON INTELLIGENT SYSTEMS. IEE, LONDON, UK.*
42. Corchado, J. M., & Lees, B. (1998). Probis: Modelling intelligence with hybrid systems. In *WORKSHOP ON DATA MINING. University of GLASGOW, SCOTLAND, UK.*
43. Corchado, J. (1998). Real time forecast with intelligent systems. In *CONFERENCE ON KNOWLEDGE DISCOVERY. IEE, SAVOY PLACE, LONDON.*
44. Corchado, J. M. (1997). Bdi multiagent hybrid architecture for project management. In *IEEE COLLOQUIUM ON KNOWLEDGE DISCOVERY AND DATA MINING. LONDON ENGLAND.*
45. Corchado, J. M. (1997). System for decision making: a practical case. In *CONFERENCE ON KNOWLEDGE DISCOVERY AND DATA MINING. IEE, LONDON, UK.*
46. Corchado, J. (1995). Cbr systems, an overview. In *INTERNATIONAL CONFERENCE ON INTELLIGENT SYSTEMS. LONDON, ENGLAND, UK.*
47. Li, T., Sun, S., Corchado, J. M., & Siyau, M. F. (2014, July). A particle dyeing approach for track continuity for the SMC-PHD filter. In *17th International Conference on Information Fusion (FUSION)* (pp. 1-8). IEEE.
48. Corchado, E. S., Corchado, J. M., Sáiz, L., & Lara, A. (2004, July). A beta-cooperative cbr system for constructing a business management model. In *Industrial Conference on Data Mining* (pp. 42-49). Springer, Berlin, Heidelberg.

49. Corchado, J. M., & Lees, B. (1998). Integration ai models. In WORKSHOP ON KNOWLEDGE DISCOVERY AND DATA MINING. PML-NERC, PLYMOUTH LONDON, UK.
50. Corchado, J. M., & Lees, B. (1998). Cognitive models for integrating artificial intelligence approaches. In ALL WORKSHOP ON KNOWLEDGE DISCOVERY. GLASGOW, UK.
51. Corchado, J. M. (1997). Real time forecast with intelligent systems: Cbrs and anns. In WORKSHOP ON ARTIFICIAL NEURAL NETWORKS. ABERDEEN (pp. 1-3).
52. Casado-Vara, R., Prieto, J., De la Prieta, F., & Corchado, J. M. (2018). How blockchain improves the supply chain: Case study alimentary supply chain. *Procedia computer science*, 134, 393-398.
53. Corchado, J. M. (1996). Case-base reasoning recommendation system. In IEEE COLLOQUIUM ON KNOWLEDGE DISCOVERY. LONDON, UK.
54. Corchado, J. M. (1995). Neuro-symbolic reasoning-a solution for complex problems. In INTERNATIONAL CONFERENCE ON INTELLIGENT SYSTEMS. LONDON, UK.
55. Corchado, J. M. (1995). Multi agent tools: a case study. In IEEE COLLOQUIUM ON KNOWLEDGE DISCOVERY. LONDON ENGLAND, UK.
56. Casado-Vara, R., Prieto-Castrillo, F., & Corchado, J. M. (2018). A game theory approach for cooperative control to improve data quality and false data detection in WSN. *International Journal of Robust and Nonlinear Control*, 28(16), 5087-5102.
57. Corchado, J. M., & Lees, B. (2001). Adaptation of cases for case based forecasting with neural network support. In *Soft computing in case based reasoning* (pp. 293-319). Springer, London.
58. Rodríguez, J. M. C. (2000). Neuro-symbolic model for real-time forecasting problems (Doctoral dissertation, University of Paisley).
59. Casado-Vara, R., Chamoso, P., De la Prieta, F., Prieto, J., & Corchado, J. M. (2019). Non-linear adaptive closed-loop control system for improved efficiency in IoT-blockchain management. *Information Fusion*, 49, 227-239.
60. Li, T., Sun, S., Corchado, J. M., & Siyau, M. F. (2014, July). Random finite set-based Bayesian filters using magnitude-adaptive target birth intensity. In 17th International Conference on Information Fusion (FUSION) (pp. 1-8). IEEE.
61. Rodríguez, S., Gil, O., De La Prieta, F., Zato, C., Corchado, J. M., Vega, P., & Francisco, M. (2010, May). People detection and stereoscopic analysis using MAS. In 2010 IEEE 14th International Conference on Intelligent Engineering Systems (pp. 159-164). IEEE.

62. Guillén, J. H., del Rey, A. M., & Casado-Vara, R. (2019). Security Countermeasures of a SCIRAS Model for Advanced Malware Propagation. *IEEE Access*, 7, 135472-135478.
63. Corchado, J. M. (1996). Artificial intelligence models: composed systems as a solution. In *IEEE COLLOQUIUM ON KNOWLEDGE DISCOVERY*. LONDON ENGLAND, UK.
64. Casado-Vara, R., De la Prieta, F., Rodríguez, S., Prieto, J., & Corchado, J. M. (2018, June). Cooperative Algorithm to Improve Temperature Control in Recovery Unit of Healthcare Facilities. In *International Symposium on Distributed Computing and Artificial Intelligence* (pp. 49-62). Springer, Cham.
65. Corchado, J. M. (1995). Hybrid cbr system for real-time temperature forecasting in the ocean. In *IEEE COLLOQUIUM ON KNOWLEDGE DISCOVERY*. LONDON, UK.
66. Corchado, J. M. (1995). A distributed recommendation system assos. In *IEEE COLLOQUIUM ON KNOWLEDGE DISCOVERY*. IEE, LONDON, UK.
67. Corchado, J. M. (1995). The use of kernel methods in cbr systems. In *INTERNATIONAL CONFERENCE ON INTELLIGENT SYSTEMS*. LONDON ENGLAND UK.
68. Corchado, J. M. (1995). Case based reasoning systems: automatic construction. In *INTERNATIONAL CONFERENCE ON INTELLIGENT SYSTEMS*. LONDON ENGLAND UK.
69. Casado-Vara, R., de la Prieta, F., Prieto, J., & Corchado, J. M. (2018, November). Blockchain framework for IoT data quality via edge computing. In *Proceedings of the 1st Workshop on Blockchain-enabled Networked Sensor Systems* (pp. 19-24). ACM.
70. Gil, A. B., De la Prieta, F., & Rodríguez, S. (2011). Automatic Learning Object Extraction and Classification in Heterogeneous Environments. In *Highlights in Practical Applications of Agents and Multiagent Systems* (pp. 109-116). Springer, Berlin, Heidelberg.
71. Rodríguez, S., Tapia, D. I., Sanz, E., Zato, C., de la Prieta, F., & Gil, O. (2010, July). Cloud computing integrated into service-oriented multi-agent architecture. In *International Conference on Information Technology for Balanced Automation Systems* (pp. 251-259). Springer, Berlin, Heidelberg.
72. Di Mascio, T., Vittorini, P., Gennari, R., Melonio, A., De La Prieta, F., & Alrifai, M. (2012, July). The Learners' User Classes in the TERENCE Adaptive Learning System. In *2012 IEEE 12th International Conference on Advanced Learning Technologies* (pp. 572-576). IEEE.

73. Mazuelas, S., Lorenzo, R. M., Bahillo, A., Fernández, P., Prieto, J., & Abril, E. J. (2010). Topology Assessment Provided by Weighted Barycentric Parameters in Harsh Environment Wireless Location Systems. *IEEE Transactions on Signal Processing*, 58(7), 3842–3857. doi:10.1109/TSP.2010.2047394
74. Prieto, J., Alonso, A. A., la Rosa, de, R., & Carrera, A. (2014). Adaptive Framework for Uncertainty Analysis in Electromagnetic Field Measurements. *Radiation Protection Dosimetry*. doi:10.1093/rpd/ncu260
75. Prieto, J., Bahillo, A., Mazuelas, S., Blas, J., Fernández, P., & Lorenzo, R. M. (2008). RTS/CTS mechanism with IEEE 802.11 for indoor location. Presented at the NAV08/ILA37, The Navigation Conference & Exhibition.
76. Prieto, J., Bahillo, A., Mazuelas, S., Fernández, P., Lorenzo, R. M., & Abril, E. J. (2012a). Self-Calibration of TOA/Distance Relationship for Wireless Localization in Harsh Environments. Presented at the 2012 IEEE International Conference on Communications (ICC 2012).
77. Prieto, J., Bahillo, A., Mazuelas, S., Lorenzo, R. M., Blas, J., & Fernández, P. (2009a). Adding indoor location capabilities to an IEEE 802.11 WLAN using real-time RTT measurements (pp. 113–119). IEEE Press. Retrieved from <http://dl.acm.org/citation.cfm?id=1689059.1689083&coll=DL&dl=GUIDE&CFID=647274630&CFTOKEN=45917612>
78. Bullon, Juan, et al. «Manufacturing processes in the textile industry. Expert Systems for fabrics production.» *ADCAIJ: Advances in Distributed Computing and Artificial Intelligence Journal* 6.4 (2017): 15-23.
79. Souza de Castro, Lucas Fernando, Gleifer Vaz Alves, & André Pinz Borges. «Using trust degree for agents in order to assign spots in a Smart Parking.» (2017).
80. Mounq, Ervin. «A Comparison of the YCBCR Color Space with Gray Scale for Face Recognition for Surveillance Applications.» *ADCAIJ: Advances in Distributed Computing and Artificial Intelligence Journal [Online]*, 6.4 (2017): 25-33.
81. Kethareswaran, V., & C. Sankar Ram. «An Indian Perspective on the adverse impact of Internet of Things (IoT).» *ADCAIJ: Advances in Distributed Computing and Artificial Intelligence Journal* 6.4 (2017): 35-40.
82. Crespo-Ramos, M. J., Machón-González, I., López-García, H., & Calvo-Rolle, J. L. (2013). Detection of locally relevant variables using SOM–NG algorithm. *Engineering Applications of Artificial Intelligence*, 26(8), 1992-2000.
83. Farias, Giovanni Parente, et al. «Predicting Plan Failure by Monitoring Action Sequences and Duration.» *ADCAIJ: Advances in Distributed Computing and Artificial Intelligence Journal* 6.4 (2017): 55-69.

84. Vera, Jefferson Stewart Espinosa. «Human rights in the ethical protection of youth in social networks-the case of Colombia and Peru.» *ADCAIJ: Advances in Distributed Computing and Artificial Intelligence Journal* 6.4 (2017): 71-79.
85. Casado-Vara, R., Martín-del Rey, A., Affes, S., Prieto, J., & Corchado, J. M. (2020). IoT network slicing on virtual layers of homogeneous data for improved algorithm operation in smart buildings. *Future Generation Computer Systems*, 102, 965-977.
86. Mateen, Abdul, et al. «Secure data access control with perception reasoning.» *ADCAIJ: Advances in Distributed Computing and Artificial Intelligence Journal* 7.1 (2018): 13-28.