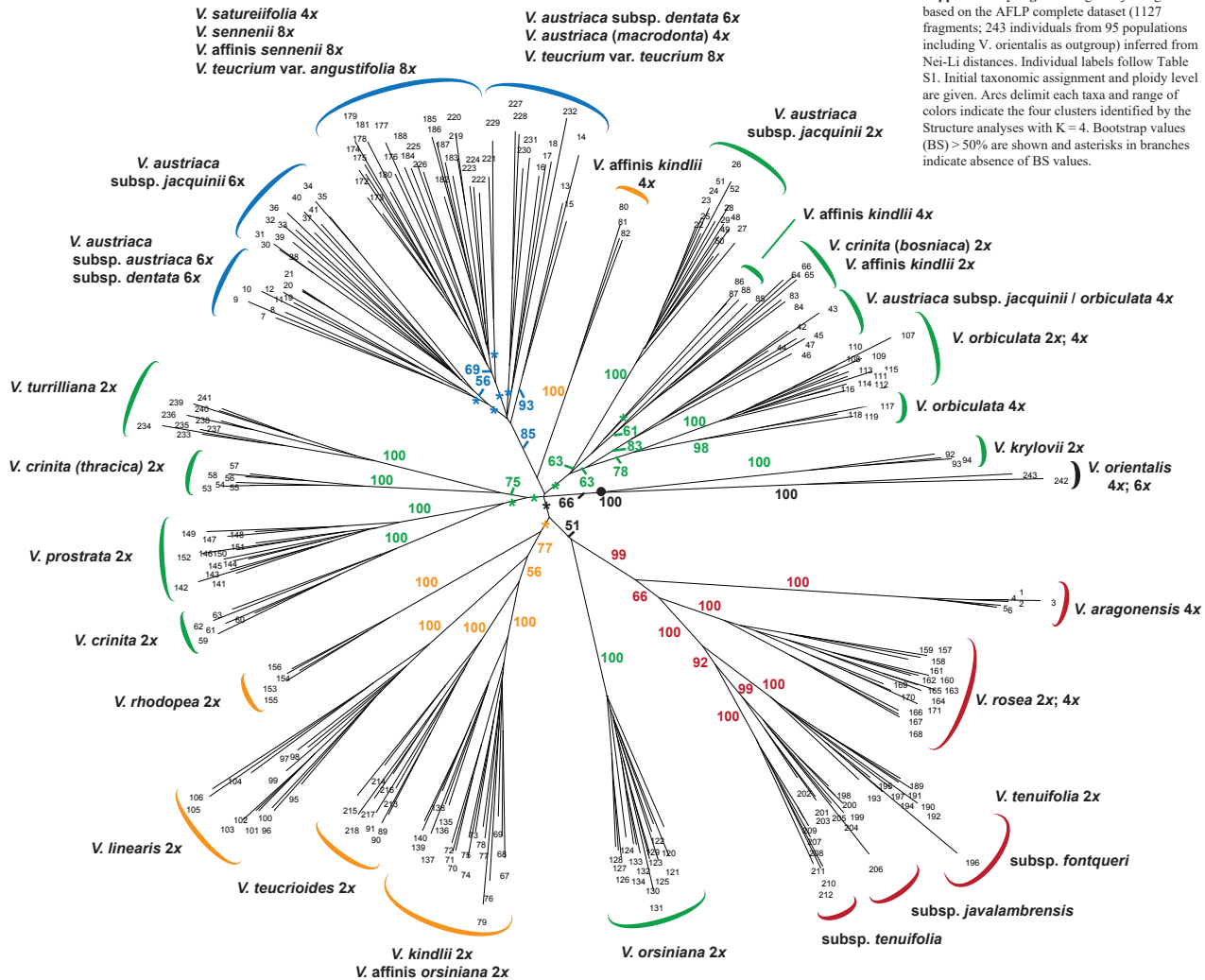
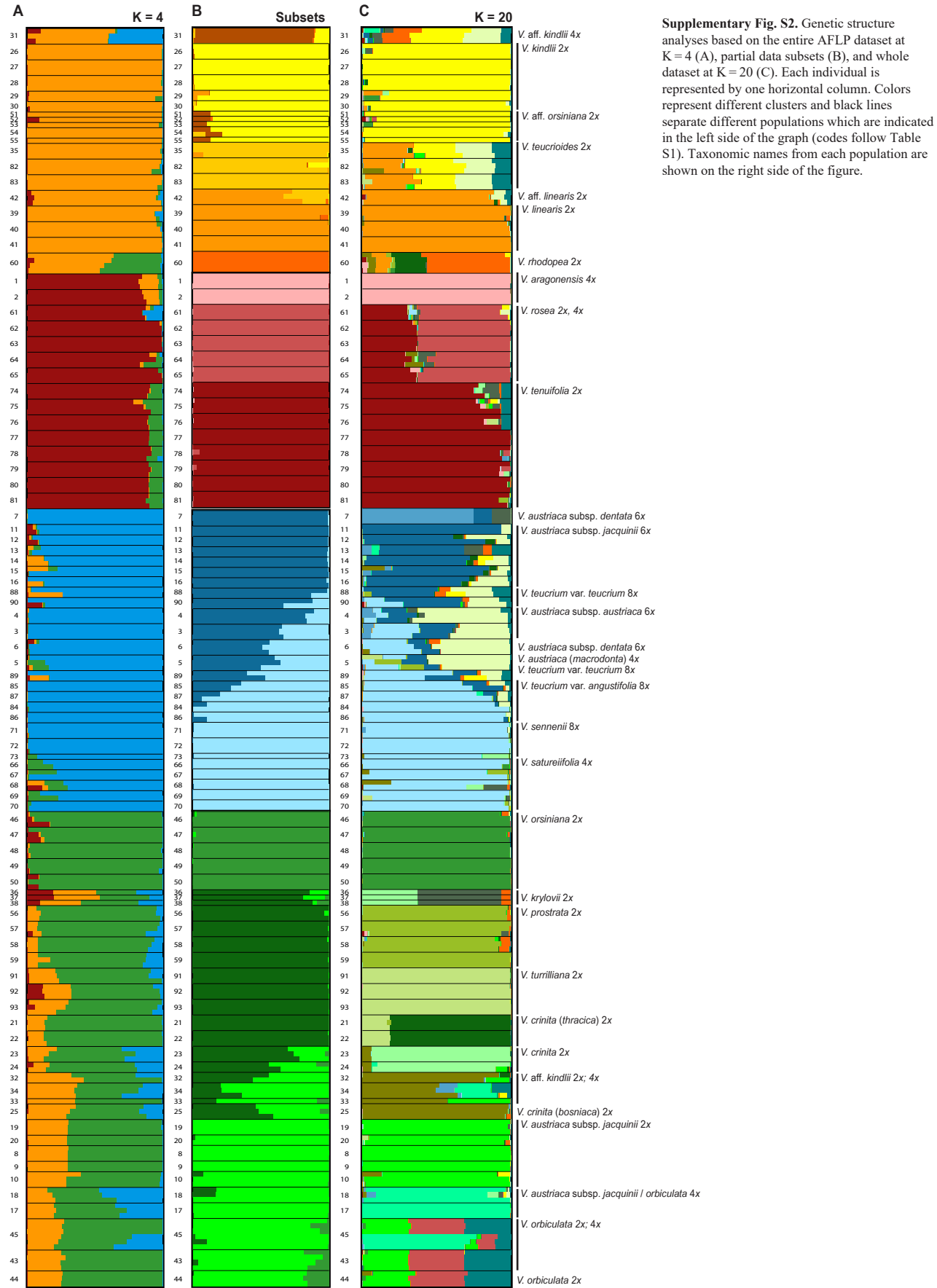


**Supplementary Fig. S1.** Neighbor-joining tree based on the AFLP complete dataset (1127 fragments; 243 individuals from 95 populations including *V. orientalis* as outgroup) inferred from Nei-Li distances. Individual labels follow Table S1. Initial taxonomic assignment and ploidy level are given. Arcs delimit each taxa and range of colors indicate the four clusters identified by the Structure analyses with  $K=4$ . Bootstrap values (BS) > 50% are shown and asterisks in branches indicate absence of BS values.





**Table S1.** Individuals of the diploid-polyploid complex *Veronica* subsection *Pentasepalae* included in the present study. Population (Pop.) and individual (Ind.) codes, collector number, DNA ploidy level, voucher code and location are indicated for each individual. The initial and final taxonomic assignments according to the results presented here are shown.

Pop. Code	Ind. Code	Initial taxonomic assignment	Final taxonomic assignment (if changed after the analyses)	Collector Number	Ploidy Level	Voucher Code*	Locality
1	1	<i>V. aragonensis</i> Stroh		<i>NPG18-14</i>	4x	SALA 154410	Spain; Huesca; Nerín, La Estiba
1	2	<i>V. aragonensis</i> Stroh		<i>NPG18-1</i>	4x	SALA 154410	Spain; Huesca; Nerín, La Estiba
1	3	<i>V. aragonensis</i> Stroh		<i>NPG18-26</i>	4x	SALA 154410	Spain; Huesca; Nerín, La Estiba
2	4	<i>V. aragonensis</i> Stroh		<i>NPG28_SD1419B</i>	4x	SALA 93529	Spain; Granada; Sierra de la Sagra
2	5	<i>V. aragonensis</i> Stroh		<i>NPG28_SB14005</i>	4x	SALA 93529	Spain; Granada; Sierra de la Sagra
2	6	<i>V. aragonensis</i> Stroh		<i>NPG28_SC1410</i>	4x	SALA 93529	Spain; Granada; Sierra de la Sagra
3	7	<i>V. austriaca</i> subsp. <i>austriaca</i> L.		<i>BR265-1</i>	6x	SALA 153002	Slovakia; Spišská Nová Ves; Letanovce, Slovenský raj
3	8	<i>V. austriaca</i> subsp. <i>austriaca</i> L.		<i>BR265-5</i>	6x	SALA 153002	Slovakia; Spišská Nová Ves; Letanovce, Slovenský raj
3	9	<i>V. austriaca</i> subsp. <i>austriaca</i> L.		<i>BR265-9</i>	6x	SALA 153002	Slovakia; Spišská Nová Ves; Letanovce, Slovenský raj
4	10	<i>V. austriaca</i> subsp. <i>austriaca</i> L.		<i>NLG129-10</i>	6x	SALA 157058	Slovakia; Černocho
4	11	<i>V. austriaca</i> subsp. <i>austriaca</i> L.		<i>NLG129-7</i>	6x	SALA 157058	Slovakia; Černocho
4	12	<i>V. austriaca</i> subsp. <i>austriaca</i> L.		<i>NLG129-9</i>	6x	SALA 157058	Slovakia; Černocho
5	13	<i>V. austriaca</i> subsp. <i>austriaca</i> L. (= <i>V. macrodonta</i> )	Unresolved	<i>MO6106-1</i>	4x	SALA 157051	Romania; Valea Lunga
5	14	<i>V. austriaca</i> subsp. <i>austriaca</i> L. (= <i>V. macrodonta</i> )	Unresolved	<i>MO6106-24</i>	4x	SALA 157051	Romania; Valea Lunga
5	15	<i>V. austriaca</i> subsp. <i>austriaca</i> L. (= <i>V. macrodonta</i> )	Unresolved	<i>MO6106-8</i>	4x	SALA 157051	Romania; Valea Lunga
6	16	<i>V. austriaca</i> subsp. <i>dentata</i> (F.W. Schmidt) Watzl		<i>BR178-1</i>	6x	SALA 149043	Austria; Niederösterreich; Krems, between Weissenkirchen and Dürnstein
6	17	<i>V. austriaca</i> subsp. <i>dentata</i> (F.W. Schmidt) Watzl		<i>BR178-3</i>	6x	SALA 149043	Austria; Niederösterreich; Krems, between Weissenkirchen and Dürnstein
6	18	<i>V. austriaca</i> subsp. <i>dentata</i> (F.W. Schmidt) Watzl		<i>BR178-4</i>	6x	SALA 149043	Austria; Niederösterreich; Krems, between Weissenkirchen and Dürnstein
7	19	<i>V. austriaca</i> subsp. <i>dentata</i> (F.W. Schmidt) Watzl		<i>BR275-1</i>	6x	SALA 155883	Hungary; Gyöngyös, Gyöngyösi Sárhegy
7	20	<i>V. austriaca</i> subsp. <i>dentata</i> (F.W. Schmidt) Watzl		<i>BR275-2</i>	6x	SALA 155883	Hungary; Gyöngyös, Gyöngyösi Sárhegy
7	21	<i>V. austriaca</i> subsp. <i>dentata</i> (F.W. Schmidt) Watzl		<i>BR275-3</i>	6x	SALA 155883	Hungary; Gyöngyös, Gyöngyösi Sárhegy
8	22	<i>V. austriaca</i> subsp. <i>jacquinii</i> (Baumg.) Watzl	<i>V. dalmatica</i> N. Pad. Gar., Rojas-Andrés, López-González & M.M. Mart. Ort.	<i>BR108-1</i>	2x	SALA 149284	Bosnia and Herzegovina; Republika Srpska; between Trebinje and Dubrovnik
8	23	<i>V. austriaca</i> subsp. <i>jacquinii</i> (Baumg.) Watzl	<i>V. dalmatica</i> N. Pad. Gar., Rojas-Andrés, López-González & M.M. Mart. Ort.	<i>BR108-3</i>	2x	SALA 149284	Bosnia and Herzegovina; Republika Srpska; between Trebinje and Dubrovnik
8	24	<i>V. austriaca</i> subsp. <i>jacquinii</i> (Baumg.) Watzl	<i>V. dalmatica</i> N. Pad. Gar., Rojas-Andrés, López-González & M.M. Mart. Ort.	<i>BR108-6</i>	2x	SALA 149284	Bosnia and Herzegovina; Republika Srpska; between Trebinje and Dubrovnik
9	25	<i>V. austriaca</i> subsp. <i>jacquinii</i> (Baumg.) Watzl	<i>V. dalmatica</i> N. Pad. Gar., Rojas-Andrés, López-González & M.M. Mart. Ort.	<i>BR112-3</i>	2x	SALA 149039	Croatia; Dubrovnik, Gromaca
9	26	<i>V. austriaca</i> subsp. <i>jacquinii</i> (Baumg.) Watzl	<i>V. dalmatica</i> N. Pad. Gar., Rojas-Andrés, López-González & M.M. Mart. Ort.	<i>BR112-4</i>	2x	SALA 149039	Croatia; Dubrovnik, Gromaca
10	27	<i>V. austriaca</i> subsp. <i>jacquinii</i> (Baumg.) Watzl	<i>V. dalmatica</i> N. Pad. Gar., Rojas-Andrés, López-González & M.M. Mart. Ort.	<i>SA392-1</i>	2x	SALA 149287	Montenegro; Zabljak
10	28	<i>V. austriaca</i> subsp. <i>jacquinii</i> (Baumg.) Watzl	<i>V. dalmatica</i> N. Pad. Gar., Rojas-Andrés, López-González & M.M. Mart. Ort.	<i>SA392-6</i>	2x	SALA 149287	Montenegro; Zabljak
10	29	<i>V. austriaca</i> subsp. <i>jacquinii</i> (Baumg.) Watzl	<i>V. dalmatica</i> N. Pad. Gar., Rojas-Andrés, López-González & M.M. Mart. Ort.	<i>SA392-8</i>	2x	SALA 149287	Montenegro; Zabljak
11	30	<i>V. austriaca</i> subsp. <i>jacquinii</i> (Baumg.) Watzl		<i>BR121-2</i>	6x	SALA 149369	Montenegro; Mts. Treskavac, between Borkovici and Boricje
11	31	<i>V. austriaca</i> subsp. <i>jacquinii</i> (Baumg.) Watzl		<i>BR121-5</i>	6x	SALA 149369	Montenegro; Mts. Treskavac, between Borkovici and Boricje
12	32	<i>V. austriaca</i> subsp. <i>jacquinii</i> (Baumg.) Watzl		<i>MO4595-2</i>	6x	SALA 149377	Bulgaria; Nova Mahala, near to Nikolaev
12	33	<i>V. austriaca</i> subsp. <i>jacquinii</i> (Baumg.) Watzl		<i>MO4595-4</i>	6x	SALA 149377	Bulgaria; Nova Mahala, near to Nikolaev
13	34	<i>V. austriaca</i> subsp. <i>jacquinii</i> (Baumg.) Watzl		<i>MO5528-2</i>	6x	SALA 149042	Croatia; Josipdol, between Ostarje and Pribarici
13	35	<i>V. austriaca</i> subsp. <i>jacquinii</i> (Baumg.) Watzl		<i>MO5528-4</i>	6x	SALA 149042	Croatia; Josipdol, between Ostarje and Pribarici
14	36	<i>V. austriaca</i> subsp. <i>jacquinii</i> (Baumg.) Watzl		<i>MS1251-1</i>	6x	SALA 149387	Greece; Mt. Vermion
14	37	<i>V. austriaca</i> subsp. <i>jacquinii</i> (Baumg.) Watzl		<i>MS1251-4</i>	6x	SALA 149387	Greece; Mt. Vermion
15	38	<i>V. austriaca</i> subsp. <i>jacquinii</i> (Baumg.) Watzl		<i>SA382-1</i>	6x	SALA 149389	Bosnia and Herzegovina; Travnik, Vlasic
15	39	<i>V. austriaca</i> subsp. <i>jacquinii</i> (Baumg.) Watzl		<i>SA382-5</i>	6x	SALA 149389	Bosnia and Herzegovina; Travnik, Vlasic
16	40	<i>V. austriaca</i> subsp. <i>jacquinii</i> (Baumg.) Watzl		<i>SA429-1</i>	6x	SALA 149392	Serbia; Devojački Bunar, Vladimirovac
16	41	<i>V. austriaca</i> subsp. <i>jacquinii</i> (Baumg.) Watzl		<i>SA429-3</i>	6x	SALA 149392	Serbia; Devojački Bunar, Vladimirovac
17	42	<i>V. austriaca</i> subsp. <i>jacquinii</i> / <i>V. orbiculata</i>	Unresolved	<i>BR102-1</i>	4x	SALA 149041	Bosnia and Herzegovina; Potoci, Porim planina, Rujiste
17	43	<i>V. austriaca</i> subsp. <i>jacquinii</i> / <i>V. orbiculata</i>	Unresolved	<i>BR102-3</i>	4x	SALA 149041	Bosnia and Herzegovina; Potoci, Porim planina, Rujiste
17	44	<i>V. austriaca</i> subsp. <i>jacquinii</i> / <i>V. orbiculata</i>	Unresolved	<i>BR102-5</i>	4x	SALA 149041	Bosnia and Herzegovina; Potoci, Porim planina, Rujiste
18	45	<i>V. austriaca</i> subsp. <i>jacquinii</i> / <i>V. orbiculata</i>	Unresolved	<i>SA377-1</i>	4x	SALA 149355	Bosnia and Herzegovina; Sarajevo, Trebevik
18	46	<i>V. austriaca</i> subsp. <i>jacquinii</i> / <i>V. orbiculata</i>	Unresolved	<i>SA377-5</i>	4x	SALA 149355	Bosnia and Herzegovina; Sarajevo, Trebevik
18	47	<i>V. austriaca</i> subsp. <i>jacquinii</i> / <i>V. orbiculata</i>	Unresolved	<i>SA377-8</i>	4x	SALA 149355	Bosnia and Herzegovina; Sarajevo, Trebevik
19	48	<i>V. austriaca</i> subsp. <i>jacquinii</i> / <i>V. orbiculata</i>	<i>V. dalmatica</i> N. Pad. Gar., Rojas-Andrés, López-González & M.M. Mart. Ort.	<i>SA386-1</i>	2x	SALA 149292	Montenegro; Kotor, Lovćen

19	49	<i>V. austriaca</i> subsp. <i>jacquinii</i> / <i>V. orbiculata</i>	<i>V. dalmatica</i> N. Pad. Gar., Rojas-Andrés, López-González & M.M. Mart. Ort.	SA386-2	2x	SALA 149292	Montenegro; Kotor, Lovćen
19	50	<i>V. austriaca</i> subsp. <i>jacquinii</i> / <i>V. orbiculata</i>	<i>V. dalmatica</i> N. Pad. Gar., Rojas-Andrés, López-González & M.M. Mart. Ort.	SA386-3	2x	SALA 149292	Montenegro; Kotor, Lovćen
20	51	<i>V. affinis jacquinii</i>	<i>V. dalmatica</i> N. Pad. Gar., Rojas-Andrés, López-González & M.M. Mart. Ort.	MO5552-2	2x	SALA 149274	Bosnia and Herzegovina; betweenTjentište and Gacko
20	52	<i>V. affinis jacquinii</i>	<i>V. dalmatica</i> N. Pad. Gar., Rojas-Andrés, López-González & M.M. Mart. Ort.	MO5552-3	2x	SALA 149274	Bosnia and Herzegovina; betweenTjentište and Gacko
21	53	<i>V. crinita</i> (= <i>V. thracica</i> )	<i>V. thracica</i> Velen.	MS1227-3	2x	SALA 149038	Bulgaria; Plovdiv, Popovitsa
21	54	<i>V. crinita</i> (= <i>V. thracica</i> )	<i>V. thracica</i> Velen.	MS1227-1	*	SALA 149038	Bulgaria; Plovdiv, Popovitsa
21	55	<i>V. crinita</i> (= <i>V. thracica</i> )	<i>V. thracica</i> Velen.	MS1227-4	2x	SALA 149038	Bulgaria; Plovdiv, Popovitsa
22	56	<i>V. crinita</i> (= <i>V. thracica</i> )	<i>V. thracica</i> Velen.	MS1244-1	2x	SALA 149386	Bulgaria; Varna, between Vinita and aladza's Monastery
22	57	<i>V. crinita</i> (= <i>V. thracica</i> )	<i>V. thracica</i> Velen.	MS1244-3	2x	SALA 149386	Bulgaria; Varna, between Vinita and aladza's Monastery
22	58	<i>V. crinita</i> (= <i>V. thracica</i> )	<i>V. thracica</i> Velen.	MS1244-4	2x	SALA 149386	Bulgaria; Varna, between Vinita and aladza's Monastery
23	59	<i>V. crinita</i> Kit		BR137-13	2x	SALA 149288	Serbia; between Zlot and Brestovac
23	60	<i>V. crinita</i> Kit		BR137-2	2x	SALA 149288	Serbia; between Zlot and Brestovac
23	61	<i>V. crinita</i> Kit		BR137-7	2x	SALA 149288	Serbia; between Zlot and Brestovac
24	62	<i>V. crinita</i> Kit		BR271-3	2x	SALA 157045	Romania; Deva, Cetate
24	63	<i>V. crinita</i> Kit		BR271-5	*	SALA 157045	Romania; Deva, Cetate
25	64	<i>V. crinita</i> (= <i>V. crinita</i> f. <i>bosniaca</i> ) Fiala	Unresolved	Frajman-12562-1	*	SALA 149244	Bosnia and Herzegovina; Ravan planina, Summit of Mt. Tajan
25	65	<i>V. crinita</i> (= <i>V. crinita</i> f. <i>bosniaca</i> ) Fiala	Unresolved	Frajman-12562-2	*	SALA 149244	Bosnia and Herzegovina; Ravan planina, Summit of Mt. Tajan
25	66	<i>V. crinita</i> (= <i>V. crinita</i> f. <i>bosniaca</i> ) Fiala	Unresolved	Frajman-12562-3	*	SALA 149244	Bosnia and Herzegovina; Ravan planina, Summit of Mt. Tajan
26	67	<i>V. kindlii</i> Adamović		BR258-18	*	SALA 157013	Greece; Boras Sky Station, summit of Kaimaktsalan
26	68	<i>V. kindlii</i> Adamović		BR258-8	*	SALA 157013	Greece; Boras Sky Station, summit of Kaimaktsalan
26	69	<i>V. kindlii</i> Adamović		BR258-9	2x	SALA 157013	Greece; Boras Sky Station, summit of Kaimaktsalan
27	70	<i>V. kindlii</i> Adamović		MO5558-10	2x	SALA 149277	Montenegro; Cakor, near to Kosovo border
27	71	<i>V. kindlii</i> Adamović		MO5558-5	2x	SALA 149277	Montenegro; Cakor, near to Kosovo border
27	72	<i>V. kindlii</i> Adamović		MO5558-8	2x	SALA 149277	Montenegro; Cakor, near to Kosovo border
28	73	<i>V. kindlii</i> Adamović		MO5569-16	2x	SALA 149278	FYROM; Gevgelija, near to Kozuf Sky Station
28	74	<i>V. kindlii</i> Adamović		MO5569-17	2x	SALA 149278	FYROM; Gevgelija, near to Kozuf Sky Station
28	75	<i>V. kindlii</i> Adamović		MO5569-18	2x	SALA 149278	FYROM; Gevgelija, near to Kozuf Sky Station
29	76	<i>V. kindlii</i> Adamović		MO6090-12	2x	SALA 157011	FYROM; Pelister, near to Pelister summit
29	77	<i>V. kindlii</i> Adamović		MO6090-4	2x	SALA 157011	FYROM; Pelister, near to Pelister summit
30	78	<i>V. kindlii</i> Adamović		MO6092-34	2x	SALA 157012	FYROM; Pelister, near to Pelister summit
30	79	<i>V. kindlii</i> Adamović		MO6092-6	2x	SALA 157012	FYROM; Pelister, near to Pelister summit
31	80	<i>V. affinis kindlii</i>	Unresolved	MS1259-12	4x	SALA 149346	Greece; Mt. Vermion
31	81	<i>V. affinis kindlii</i>	Unresolved	MS1259-8	4x	SALA 149346	Greece; Mt. Vermion
31	82	<i>V. affinis kindlii</i>	Unresolved	MS1259-9	4x	SALA 149346	Greece; Mt. Vermion
32	83	<i>V. affinis kindlii</i>	Unresolved	SA394-1	2x	SALA 149280	Montenegro; between Pljevlja and Bobovo
32	84	<i>V. affinis kindlii</i>	Unresolved	SA394-6	2x	SALA 149280	Montenegro; between Pljevlja and Bobovo
33	85	<i>V. affinis kindlii</i>	Unresolved	SA394-BIS	2x	SALA 149281	Montenegro; between Pljevlja and Bobovo
34	86	<i>V. affinis kindlii</i>	Unresolved	SA393*-1	*	SALA 149347	Montenegro; Zabljak
34	87	<i>V. affinis kindlii</i>	Unresolved	SA393*-2	4x	SALA 149347	Montenegro; Zabljak
34	88	<i>V. affinis kindlii</i>	Unresolved	SA393*-5	4x	SALA 149347	Montenegro; Zabljak
35	89	<i>V. affinis kindlii</i>	<i>V. teucrioides</i> Boiss. & Heldr.	NLG119bis-1	2x	SALA 155864	FYROM; Galichica, between Trpejca and Oteševo
35	90	<i>V. affinis kindlii</i>	<i>V. teucrioides</i> Boiss. & Heldr.	NLG119bis-2	2x	SALA 155864	FYROM; Galichica, between Trpejca and Oteševo
35	91	<i>V. affinis kindlii</i>	<i>V. teucrioides</i> Boiss. & Heldr.	NLG119bis-3	2x	SALA 155864	FYROM; Galichica, between Trpejca and Oteševo
36	92	<i>V. krylovii</i> Schischk.		Albach 1275	2x	OLD	Russia; Republic of Altai, Chike-Taman-Pass
37	93	<i>V. krylovii</i> Schischk.		s.n	*	ALTB	Russia; Altay region, Charyshsky distr.
38	94	<i>V. krylovii</i> Schischk.		s.n	*	ALTB	Russia; Altay region, Petropavlovsky distr.
39	95	<i>V. linearis</i> (Bormm.) Rojas-Andrés & M.M. Mart. Ort.		MO6094-19	*	SALA 153001	FYROM; between Modrište and Zdunje, near to Jezero Kozjak
39	96	<i>V. linearis</i> (Bormm.) Rojas-Andrés & M.M. Mart. Ort.		MO6094-1	2x	SALA 153001	FYROM; between Modrište and Zdunje, near to Jezero Kozjak
39	97	<i>V. linearis</i> (Bormm.) Rojas-Andrés & M.M. Mart. Ort.		MO6094-3	2x	SALA 153001	FYROM; between Modrište and Zdunje, near to Jezero Kozjak
40	98	<i>V. linearis</i> (Bormm.) Rojas-Andrés & M.M. Mart. Ort.		NLG151-10	2x	SALA 157040	FYROM; Skopje, near to Nova Breznica
40	99	<i>V. linearis</i> (Bormm.) Rojas-Andrés & M.M. Mart. Ort.		NLG151-11	2x	SALA 157040	FYROM; Skopje, near to Nova Breznica
40	100	<i>V. linearis</i> (Bormm.) Rojas-Andrés & M.M. Mart. Ort.		NLG151-8	2x	SALA 157040	FYROM; Skopje, near to Nova Breznica
41	101	<i>V. linearis</i> (Bormm.) Rojas-Andrés & M.M. Mart. Ort.		NPG51-1	2x	SALA 157038	FYROM; Prilep, Sivec, marble mountain
41	102	<i>V. linearis</i> (Bormm.) Rojas-Andrés & M.M. Mart. Ort.		NPG51-2	2x	SALA 157038	FYROM; Prilep, Sivec, marble mountain

41	103	<i>V. linearis</i> (Bormm.) Rojas-Andrés & M.M. Mart. Ort.		<i>NPG51-3</i>	2x	SALA 157038	FYROM; Prilep, Sivec, marble mountain
42	104	<i>V. affinis linearis</i>	<i>V. linearis</i> (Bormm.) Rojas-Andrés & M.M. Mart. Ort.	<i>NLG125-26</i>	2x	SALA 153000	FYROM; Brod, near to Barbaros port
42	105	<i>V. affinis linearis</i>	<i>V. linearis</i> (Bormm.) Rojas-Andrés & M.M. Mart. Ort.	<i>NLG125-29</i>	2x	SALA 153000	FYROM; Brod, near to Barbaros port
42	106	<i>V. affinis linearis</i>	<i>V. linearis</i> (Bormm.) Rojas-Andrés & M.M. Mart. Ort.	<i>NLG125-32</i>	2x	SALA 153000	FYROM; Brod, near to Barbaros port
43	107	<i>V. orbiculata</i> A. Kern		<i>BR100-12</i>	4x	SALA 149336	Bosnia and Herzegovina; Mostar, Hum mountain
43	108	<i>V. orbiculata</i> A. Kern		<i>BR100-13</i>	4x	SALA 149336	Bosnia and Herzegovina; Mostar, Hum mountain
43	109	<i>V. orbiculata</i> A. Kern		<i>BR100-1</i>	2x	SALA 149336	Bosnia and Herzegovina; Mostar, Hum mountain
43	110	<i>V. orbiculata</i> A. Kern		<i>BR100-3</i>	2x	SALA 149336	Bosnia and Herzegovina; Mostar, Hum mountain
44	111	<i>V. orbiculata</i> A. Kern		<i>BR110-1</i>	2x	SALA 149294	Croatia; Peljesak Peninsula, between Trstenik and Pijavicino
44	112	<i>V. orbiculata</i> A. Kern		<i>BR110-3</i>	2x	SALA 149294	Croatia; Peljesak Peninsula, between Trstenik and Pijavicino
44	113	<i>V. orbiculata</i> A. Kern		<i>BR110-4</i>	2x	SALA 149294	Croatia; Peljesak Peninsula, between Trstenik and Pijavicino
45	114	<i>V. orbiculata</i> A. Kern		<i>MO5537-12</i>	2x	SALA 149337	Croatia; Makarska, between Omis and Makarska, Gornja Brela
45	115	<i>V. orbiculata</i> A. Kern		<i>MO5537-13</i>	2x	SALA 149337	Croatia; Makarska, between Omis and Makarska, Gornja Brela
45	116	<i>V. orbiculata</i> A. Kern		<i>MO5537-1</i>	2x	SALA 149337	Croatia; Makarska, between Omis and Makarska, Gornja Brela
45	117	<i>V. orbiculata</i> A. Kern		<i>MO5537-4</i>	4x	SALA 149337	Croatia; Makarska, between Omis and Makarska, Gornja Brela
45	118	<i>V. orbiculata</i> A. Kern		<i>MO5537-5</i>	4x	SALA 149337	Croatia; Makarska, between Omis and Makarska, Gornja Brela
45	119	<i>V. orbiculata</i> A. Kern		<i>MO5537-7</i>	4x	SALA 149337	Croatia; Makarska, between Omis and Makarska, Gornja Brela
46	120	<i>V. orsiniana</i> Ten.		<i>BR201-11</i>	2x	SALA 149301	France; Department of Hérault, Saint-Chinian, between Malibert and Pardailhan
46	121	<i>V. orsiniana</i> Ten.		<i>BR201-1</i>	2x	SALA 149301	France; Department of Hérault, Saint-Chinian, between Malibert and Pardailhan
46	122	<i>V. orsiniana</i> Ten.		<i>BR201-2</i>	2x	SALA 149301	France; Department of Hérault, Saint-Chinian, between Malibert and Pardailhan
47	123	<i>V. orsiniana</i> Ten.		<i>BR205-2</i>	2x	SALA 149304	France; Department of Lozère, Cévennes, Aven Armand
47	124	<i>V. orsiniana</i> Ten.		<i>BR205-4</i>	2x	SALA 149304	France; Department of Lozère, Cévennes, Aven Armand
47	125	<i>V. orsiniana</i> Ten.		<i>BR205-5</i>	2x	SALA 149304	France; Department of Lozère, Cévennes, Aven Armand
48	126	<i>V. orsiniana</i> Ten.		<i>BR213-17</i>	2x	SALA 149309	France; Department of Alpes-Maritimes, between Tende and Col de Tende's tunnel
48	127	<i>V. orsiniana</i> Ten.		<i>BR213-3</i>	2x	SALA 149309	France; Department of Alpes-Maritimes, between Tende and Col de Tende's tunnel
48	128	<i>V. orsiniana</i> Ten.		<i>BR213-5</i>	2x	SALA 149309	France; Department of Alpes-Maritimes, between Tende and Col de Tende's tunnel
49	129	<i>V. orsiniana</i> Ten.		<i>BR239-10</i>	2x	SALA 155118	Spain; Huesca; 7km from Benabarre, road A1606 to Laguarres
49	130	<i>V. orsiniana</i> Ten.		<i>BR239-1</i>	2x	SALA 155118	Spain; Huesca; 7km from Benabarre, road A1606 to Laguarres
49	131	<i>V. orsiniana</i> Ten.		<i>BR239-5</i>	2x	SALA 155118	Spain; Huesca; 7km from Benabarre, road A1606 to Laguarres
50	132	<i>V. orsiniana</i> Ten.		<i>MO6056-1</i>	2x	SALA 155070	Spain; Castellón, Rambla de las truchas
50	133	<i>V. orsiniana</i> Ten.		<i>MO6056-3</i>	2x	SALA 155070	Spain; Castellón, Rambla de las truchas
50	134	<i>V. orsiniana</i> Ten.		<i>MO6056-9</i>	2x	SALA 155070	Spain; Castellón, Rambla de las truchas
51	135	<i>V. affinis orsiniana</i>	<i>V. kindlii</i> Adamović	<i>MO6078-1</i>	2x	SALA 155877	Italy; Calabria, Monte Pollino, Coll di Dragone to Voscarì
52	136	<i>V. affinis orsiniana</i>	<i>V. kindlii</i> Adamović	<i>MO6079-6</i>	2x	SALA 155878	Italy; Calabria, Monte Pollino, Coll di Dragone to Voscarì
53	137	<i>V. affinis orsiniana</i>	<i>V. kindlii</i> Adamović	<i>MO6079*-3</i>	2x	SALA 155876	Italy; Calabria, Monte Pollino, Coll di Dragone to Voscarì
54	138	<i>V. affinis orsiniana</i>	<i>V. kindlii</i> Adamović	<i>NLG108-2</i>	2x	SALA 155881	Italy; Calabria, between Ceci and Loricca, ca. 7 km to the west from Loricca
54	139	<i>V. affinis orsiniana</i>	<i>V. kindlii</i> Adamović	<i>NLG108-3</i>	2x	SALA 155881	Italy; Calabria, between Ceci and Loricca, ca. 7 km to the west from Loricca
55	140	<i>V. affinis orsiniana</i>	<i>V. kindlii</i> Adamović	<i>NLG109-1</i>	2x	SALA 155879	Italy; Calabria, between Ceci and Loricca, ca. 7 km to the west from Loricca
56	141	<i>V. prostrata</i> L.		<i>BR182-12</i>	2x	SALA 149040	Austria; Niederösterreich; Rohrendorf bei Krems, Saubühel
56	142	<i>V. prostrata</i> L.		<i>BR182-14</i>	2x	SALA 149040	Austria; Niederösterreich; Rohrendorf bei Krems, Saubühel
56	143	<i>V. prostrata</i> L.		<i>BR182-9</i>	2x	SALA 149040	Austria; Niederösterreich; Rohrendorf bei Krems, Saubühel
57	144	<i>V. prostrata</i> L.		<i>MO6037-2</i>	2x	SALA 149315	France; Department of Hautes-Alpes, Gap, Col de Bayard
57	145	<i>V. prostrata</i> L.		<i>MO6037-3</i>	2x	SALA 149315	France; Department of Hautes-Alpes, Gap, Col de Bayard
57	146	<i>V. prostrata</i> L.		<i>MO6037-7</i>	2x	SALA 149315	France; Department of Hautes-Alpes, Gap, Col de Bayard
58	147	<i>V. prostrata</i> L.		<i>MS1239-1</i>	2x	SALA 149317	Bulgaria; Madara, near to the village
58	148	<i>V. prostrata</i> L.		<i>MS1239-2</i>	2x	SALA 149317	Bulgaria; Madara, near to the village
58	149	<i>V. prostrata</i> L.		<i>MS1239-3</i>	2x	SALA 149317	Bulgaria; Madara, near to the village
59	150	<i>V. prostrata</i> L.		<i>NPG6-10</i>	2x	SALA 155856	Italy; Abruzzo, Gioia dei Marsi, from Sperone to Monte Serrato
59	151	<i>V. prostrata</i> L.		<i>NPG6-13</i>	2x	SALA 155856	Italy; Abruzzo, Gioia dei Marsi, from Sperone to Monte Serrato
59	152	<i>V. prostrata</i> L.		<i>NPG6-9</i>	2x	SALA 155856	Italy; Abruzzo, Gioia dei Marsi, from Sperone to Monte Serrato
60	153	<i>V. rhodopea</i> (Velen.) Degen. ex Stoj. & Stef.		<i>BR12-10</i>	2x	SALA 149321	Bulgaria; Belmeken
60	154	<i>V. rhodopea</i> (Velen.) Degen. ex Stoj. & Stef.		<i>BR12-1</i>	2x	SALA 149321	Bulgaria; Belmeken
60	155	<i>V. rhodopea</i> (Velen.) Degen. ex Stoj. & Stef.		<i>BR12-3</i>	2x	SALA 149321	Bulgaria; Belmeken
60	156	<i>V. rhodopea</i> (Velen.) Degen. ex Stoj. & Stef.		<i>BR12-6</i>	2x	SALA 149321	Bulgaria; Belmeken

61	157	<i>V. rosea</i> Desf.		<i>DP783-14</i>	2x	SALA 149323	Morocco; prov. Ifrane, Azrou, near to Djebel Hebri, western slope
61	158	<i>V. rosea</i> Desf.		<i>DP783-19</i>	2x	SALA 149323	Morocco; prov. Ifrane, Azrou, near to Djebel Hebri, western slope
61	159	<i>V. rosea</i> Desf.		<i>DP783-2</i>	2x	SALA 149323	Morocco; prov. Ifrane, Azrou, near to Djebel Hebri, western slope
62	160	<i>V. rosea</i> Desf.		<i>MO5502-10</i>	2x	SALA 149324	Algeria; Col de Krorchef
62	161	<i>V. rosea</i> Desf.		<i>MO5502-14</i>	2x	SALA 149324	Algeria; Col de Krorchef
62	162	<i>V. rosea</i> Desf.		<i>MO5502-5</i>	2x	SALA 149324	Algeria; Col de Krorchef
63	163	<i>V. rosea</i> Desf.		<i>MO5510-3</i>	4x	SALA 149338	Algeria; Batna, summit of Djebel Ichali
63	164	<i>V. rosea</i> Desf.		<i>MO5510-4</i>	2x	SALA 149338	Algeria; Batna, summit of Djebel Ichali
63	165	<i>V. rosea</i> Desf.		<i>MO5510-6</i>	4x	SALA 149338	Algeria; Batna, summit of Djebel Ichali
64	166	<i>V. rosea</i> Desf.		<i>NLG88-12</i>	2x	SALA 155071	Marocco; Souss-Massa-Drâa, Jebel Siroua, northern route
64	167	<i>V. rosea</i> Desf.		<i>NLG88-25</i>	2x	SALA 155071	Marocco; Souss-Massa-Drâa, Jebel Siroua, northern route
64	168	<i>V. rosea</i> Desf.		<i>NLG88-27</i>	2x	SALA 155071	Marocco; Souss-Massa-Drâa, Jebel Siroua, northern route
65	169	<i>V. rosea</i> Desf.		<i>VL87-13</i>	2x	SALA 149326	Morocco; Bab Taza, to the north from Jbel L'akraa
65	170	<i>V. rosea</i> Desf.		<i>VL87-4</i>	2x	SALA 149326	Morocco; Bab Taza, to the north from Jbel L'akraa
65	171	<i>V. rosea</i> Desf.		<i>VL87-7</i>	2x	SALA 149326	Morocco; Bab Taza, to the north from Jbel L'akraa
66	172	<i>V. satreüifolia</i> Poit. & Turpin		<i>BR204-11</i>	4x	SALA 149356	France; Department of Lozère, Cévennes
66	173	<i>V. satreüifolia</i> Poit. & Turpin		<i>BR204-3</i>	4x	SALA 149356	France; Department of Lozère, Cévennes
67	174	<i>V. satreüifolia</i> Poit. & Turpin		<i>BR244-21</i>	4x	SALA 155108	Spain; Huesca, Aragón del Puerto, Llanos de Lizara
67	175	<i>V. satreüifolia</i> Poit. & Turpin		<i>BR244-24</i>	4x	SALA 155108	Spain; Huesca, Aragón del Puerto, Llanos de Lizara
68	176	<i>V. satreüifolia</i> Poit. & Turpin		<i>DA603-1</i>	*	WU	Germany; Rheinland-Pfalz, Nature protection area Uhlernborn
68	177	<i>V. satreüifolia</i> Poit. & Turpin		<i>DA603-5</i>	*	WU	Germany; Rheinland-Pfalz, Nature protection area Uhlernborn
69	178	<i>V. satreüifolia</i> Poit. & Turpin		<i>MO6070-4</i>	4x	SALA 155113	Spain; Huesca, Borau, Las Blancas
69	179	<i>V. satreüifolia</i> Poit. & Turpin		<i>MO6070-5</i>	4x	SALA 155113	Spain; Huesca, Borau, Las Blancas
70	180	<i>V. satreüifolia</i> Poit. & Turpin		<i>NPG2-10</i>	4x	SALA 154213	France; Department of Seine and Marne, Fontainebleau forest
70	181	<i>V. satreüifolia</i> Poit. & Turpin		<i>NPG2-12</i>	4x	SALA 154213	France; Department of Seine and Marne, Fontainebleau forest
71	182	<i>V. sennenii</i> (Pau) M.M. Mart. Ort. & E. Rico		<i>BR223-1</i>	8x	SALA 149394	Spain; Álava, Salinas de Añana, from Sobrón to collado de la Rastrilla
71	183	<i>V. sennenii</i> (Pau) M.M. Mart. Ort. & E. Rico		<i>BR223-2</i>	8x	SALA 149394	Spain; Álava, Salinas de Añana, from Sobrón to collado de la Rastrilla
71	184	<i>V. sennenii</i> (Pau) M.M. Mart. Ort. & E. Rico		<i>BR223-5</i>	8x	SALA 149394	Spain; Álava, Salinas de Añana, from Sobrón to collado de la Rastrilla
72	185	<i>V. sennenii</i> (Pau) M.M. Mart. Ort. & E. Rico		<i>BR224-1</i>	8x	SALA 149395	Spain; Cantabria, Sonabia
72	186	<i>V. sennenii</i> (Pau) M.M. Mart. Ort. & E. Rico		<i>BR224-2</i>	8x	SALA 149395	Spain; Cantabria, Sonabia
72	187	<i>V. sennenii</i> (Pau) M.M. Mart. Ort. & E. Rico		<i>BR224-5</i>	8x	SALA 149395	Spain; Cantabria, Sonabia
73	188	<i>V. affinis sennenii</i>	<i>V. sennenii</i> (Pau) M.M. Mart. Ort. & E. Rico	<i>MO6070BIS</i>	8x	SALA 155112	Spain; Huesca, Borau, Las Blancas
74	189	<i>V. tenuifolia</i> subsp. <i>fontqueri</i> (Pau) M.M. Mart. Ort. & E. Rico		<i>s.n.</i>	*	GDA 57010	Spain; Granada, Calar de los Tejoletos
74	190	<i>V. tenuifolia</i> subsp. <i>fontqueri</i> (Pau) M.M. Mart. Ort. & E. Rico		<i>s.n.</i>	*	GDA 57010	Spain; Granada, Calar de los Tejoletos
74	191	<i>V. tenuifolia</i> subsp. <i>fontqueri</i> (Pau) M.M. Mart. Ort. & E. Rico		<i>s.n.</i>	2x	GDA 57010	Spain; Granada, Calar de los Tejoletos
75	192	<i>V. tenuifolia</i> subsp. <i>fontqueri</i> (Pau) M.M. Mart. Ort. & E. Rico		<i>MO1519-3-3</i>	2x	SALA 120855	Spain; Almería, Dalías, Sierra de Gádor, Cerro de La Atalaya and Dos Hermanas
75	193	<i>V. tenuifolia</i> subsp. <i>fontqueri</i> (Pau) M.M. Mart. Ort. & E. Rico		<i>MO1519-3-4</i>	2x	SALA 120855	Spain; Almería, Dalías, Sierra de Gádor, Cerro de La Atalaya and Dos Hermanas
75	194	<i>V. tenuifolia</i> subsp. <i>fontqueri</i> (Pau) M.M. Mart. Ort. & E. Rico		<i>MO1519-3-6</i>	2x	SALA 120855	Spain; Almería, Dalías, Sierra de Gádor, Cerro de La Atalaya and Dos Hermanas
76	195	<i>V. tenuifolia</i> subsp. <i>fontqueri</i> (Pau) M.M. Mart. Ort. & E. Rico		<i>NPG27-1</i>	2x	MGC 46659	Spain; Ronda, Sierra de Las Nieves, Los Quejigales, Puerto de Los Pilonos
76	196	<i>V. tenuifolia</i> subsp. <i>fontqueri</i> (Pau) M.M. Mart. Ort. & E. Rico		<i>NPG27-3</i>	2x	MGC 46659	Spain; Ronda, Sierra de Las Nieves, Los Quejigales, Puerto de Los Pilonos
76	197	<i>V. tenuifolia</i> subsp. <i>fontqueri</i> (Pau) M.M. Mart. Ort. & E. Rico		<i>NPG27-5</i>	2x	MGC 46659	Spain; Ronda, Sierra de Las Nieves, Los Quejigales, Puerto de Los Pilonos
77	198	<i>V. tenuifolia</i> subsp. <i>javallambrensis</i> (Pau) Molero & J. Pujadas		<i>BR222-3</i>	2x	SALA 149328	Spain; Salamanca, La Mata de la Armuña
77	199	<i>V. tenuifolia</i> subsp. <i>javallambrensis</i> (Pau) Molero & J. Pujadas		<i>BR222-4</i>	2x	SALA 149328	Spain; Salamanca, La Mata de la Armuña
77	200	<i>V. tenuifolia</i> subsp. <i>javallambrensis</i> (Pau) Molero & J. Pujadas		<i>BR222-7</i>	2x	SALA 149328	Spain; Salamanca, La Mata de la Armuña
78	201	<i>V. tenuifolia</i> subsp. <i>javallambrensis</i> (Pau) Molero & J. Pujadas		<i>NLG23-1</i>	2x	SALA 155079	Spain; León, Montes de Valdeuza, La Guiana, Los Apóstoles
78	202	<i>V. tenuifolia</i> subsp. <i>javallambrensis</i> (Pau) Molero & J. Pujadas		<i>NLG23-24</i>	2x	SALA 155079	Spain; León, Montes de Valdeuza, La Guiana, Los Apóstoles
78	203	<i>V. tenuifolia</i> subsp. <i>javallambrensis</i> (Pau) Molero & J. Pujadas		<i>NLG23-6</i>	2x	SALA 155079	Spain; León, Montes de Valdeuza, La Guiana, Los Apóstoles
79	204	<i>V. tenuifolia</i> subsp. <i>javallambrensis</i> (Pau) Molero & J. Pujadas		<i>NLG05-2</i>	2x	SALA 155105	Spain; Guadalajara, Atienza, Naharrós
79	205	<i>V. tenuifolia</i> subsp. <i>javallambrensis</i> (Pau) Molero & J. Pujadas		<i>NLG05-5</i>	2x	SALA 155105	Spain; Guadalajara, Atienza, Naharrós
79	206	<i>V. tenuifolia</i> subsp. <i>javallambrensis</i> (Pau) Molero & J. Pujadas		<i>NLG05-7</i>	2x	SALA 155105	Spain; Guadalajara, Atienza, Naharrós
80	207	<i>V. tenuifolia</i> subsp. <i>tenuifolia</i> Asso		<i>BR241-12</i>	2x	SALA 155117	Spain; Castellón, Morella. San Cristobal's chapel
80	208	<i>V. tenuifolia</i> subsp. <i>tenuifolia</i> Asso		<i>BR241-1</i>	2x	SALA 155117	Spain; Castellón, Morella. San Cristobal's chapel
80	209	<i>V. tenuifolia</i> subsp. <i>tenuifolia</i> Asso		<i>BR241-3</i>	2x	SALA 155117	Spain; Castellón, Morella. San Cristobal's chapel
81	210	<i>V. tenuifolia</i> subsp. <i>tenuifolia</i> Asso		<i>MO6058-15</i>	2x	SALA 155096	Spain; Huesca, Arro, road to Los Molinos and S. Vitorian Monastery

81	211	<i>V. tenuifolia</i> subsp. <i>tenuifolia</i> Asso		MO6058-5	2x	SALA 155096	Spain; Huesca, Arro, road to Los Molinos and S. Vitorián Monastery
81	212	<i>V. tenuifolia</i> subsp. <i>tenuifolia</i> Asso		MO6058-8	2x	SALA 155096	Spain; Huesca, Arro, road to Los Molinos and S. Vitorián Monastery
82	213	<i>V. teucrioides</i> Boiss. & Heldr.		BR130-15	2x	SALA 149329	FYROM; Mavrovo, Bistra planina, between Mavrovo and Galicnik
82	214	<i>V. teucrioides</i> Boiss. & Heldr.		BR130-1	2x	SALA 149329	FYROM; Mavrovo, Bistra planina, between Mavrovo and Galicnik
82	215	<i>V. teucrioides</i> Boiss. & Heldr.		BR130-8	2x	SALA 149329	FYROM; Mavrovo, Bistra planina, between Mavrovo and Galicnik
83	216	<i>V. teucrioides</i> Boiss. & Heldr.		BR48-10	2x	SALA 149330	Greece; Mt. Olimpo, Sparmos
83	217	<i>V. teucrioides</i> Boiss. & Heldr.		BR48-11	2x	SALA 149330	Greece; Mt. Olimpo, Sparmos
83	218	<i>V. teucrioides</i> Boiss. & Heldr.		BR48-1	2x	SALA 149330	Greece; Mt. Olimpo, Sparmos
84	219	<i>V. teucrium</i> L. var. <i>angustifolia</i>	<i>V. angustifolia</i> (Vahl) Bernh.	BR168-11	8x	SALA 149399	France; Department of Haute-Savoie, Monte Salève near to Ginebra
84	220	<i>V. teucrium</i> L. var. <i>angustifolia</i>	<i>V. angustifolia</i> (Vahl) Bernh.	BR168-7	8x	SALA 149399	France; Department of Haute-Savoie, Monte Salève near to Ginebra
85	221	<i>V. teucrium</i> L. var. <i>angustifolia</i>	<i>V. angustifolia</i> (Vahl) Bernh.	BR211-18	8x	SALA 149409	France; Department of Alpes-Maritimes, Grasse; near to Causols, col de l'Ècre
85	222	<i>V. teucrium</i> L. var. <i>angustifolia</i>	<i>V. angustifolia</i> (Vahl) Bernh.	BR211-2	8x	SALA 149409	France; Department of Alpes-Maritimes, Grasse; near to Causols, col de l'Ècre
86	223	<i>V. teucrium</i> L. var. <i>angustifolia</i>	<i>V. angustifolia</i> (Vahl) Bernh.	MO6022-14	8x	SALA 149413	France; Department of Eure-et-Loir, Châteaudun, Thiville
86	224	<i>V. teucrium</i> L. var. <i>angustifolia</i>	<i>V. angustifolia</i> (Vahl) Bernh.	MO6022-7	8x	SALA 149413	France; Department of Eure-et-Loir, Châteaudun, Thiville
87	225	<i>V. teucrium</i> L. var. <i>angustifolia</i>	<i>V. angustifolia</i> (Vahl) Bernh.	NPG3-1	8x	SALA 154237	France; Department of Essonne, Valpuiseaux. La Lieu
87	226	<i>V. teucrium</i> L. var. <i>angustifolia</i>	<i>V. angustifolia</i> (Vahl) Bernh.	NPG3-3	8x	SALA 154237	France; Department of Essonne, Valpuiseaux. La Lieu
88	227	<i>V. teucrium</i> L. var. <i>teucrium</i>	<i>V. teucrium</i> L.	MO4574-10	8x	SALA 149044	Bulgaria; near to Tran, between Pernik and Tran
88	228	<i>V. teucrium</i> L. var. <i>teucrium</i>	<i>V. teucrium</i> L.	MO4574-2	8x	SALA 149044	Bulgaria; near to Tran, between Pernik and Tran
89	229	<i>V. teucrium</i> L. var. <i>teucrium</i>	<i>V. teucrium</i> L.	MO6025-3	8x	SALA 149414	Germany; Nordrhein-Westfalen, Euskirchen, between Iversheim and Arloff
89	230	<i>V. teucrium</i> L. var. <i>teucrium</i>	<i>V. teucrium</i> L.	MO6025-6	8x	SALA 149414	Germany; Nordrhein-Westfalen, Euskirchen, between Iversheim and Arloff
90	231	<i>V. teucrium</i> L. var. <i>teucrium</i>	<i>V. teucrium</i> L.	MO6042-17B	8x	SALA 149419	Austria; Kärnten, Villach, Oberschütt to Unterschütt
90	232	<i>V. teucrium</i> L. var. <i>teucrium</i>	<i>V. teucrium</i> L.	MO6042-8A	8x	SALA 149418	Austria; Kärnten, Villach, Oberschütt to Unterschütt
91	233	<i>V. turrilliana</i> Stoj. & Stef.		BR41-10	2x	SALA 149331	Turkey; Kirklareli, from Dereköy to Armağan
91	234	<i>V. turrilliana</i> Stoj. & Stef.		BR41-1	2x	SALA 149331	Turkey; Kirklareli, from Dereköy to Armağan
91	235	<i>V. turrilliana</i> Stoj. & Stef.		BR41-2	2x	SALA 149331	Turkey; Kirklareli, from Dereköy to Armağan
92	236	<i>V. turrilliana</i> Stoj. & Stef.		BR45-2	2x	SALA 149333	Turkey; 6 Km. from Vize, to Kömürköy-Alkpinars
92	237	<i>V. turrilliana</i> Stoj. & Stef.		BR45-3	2x	SALA 149333	Turkey; 6 Km. from Vize, to Kömürköy-Alkpinars
92	238	<i>V. turrilliana</i> Stoj. & Stef.		BR45-5	2x	SALA 149333	Turkey; 6 Km. from Vize, to Kömürköy-Alkpinars
93	239	<i>V. turrilliana</i> Stoj. & Stef.		MS1247-1	2x	SALA 149334	Bulgaria; 15 Km to the north of Malko Turnovo
93	240	<i>V. turrilliana</i> Stoj. & Stef.		MS1247-2	2x	SALA 149334	Bulgaria; 15 Km to the north of Malko Turnovo
93	241	<i>V. turrilliana</i> Stoj. & Stef.		MS1247-9	2x	SALA 149334	Bulgaria; 15 Km to the north of Malko Turnovo
94	242	** <i>V. orientalis</i> Mill.		MA3463	6x	OLD & VANF	Turkey; Prov. Van, Güzeldere Pass
95	243	** <i>V. orientalis</i> Mill.		MA3437	4x	OLD & VANF	Turkey; Prov. Van, between Gürpinar and Güzelsu

\* Ploidy level not available

\*\* Outgroup

**Table S2.** Primer combinations and fluorescent dye labels used in AFLP genotyping. Number of fragments generated by each automated AFLP scoring methodology is shown.

AFLP primer combinations	Color dye	No. of fragments	
		tinyFLP	Holland's Scripts
MseI-CAT EcoRI-ACT	6-FAM	309	222
MseI-CTG EcoRI-AAG	VIC	249	217
MseI-CTT EcoRI-ACC	NED	310	466
MseI-CAA EcoRI-ACC	PET	259	256
Total no. of fragments		1127	1161



**Table S3.** Parameter space used to find the optimal scoring parameters using optiFLP, and optimized parameters detected for each fluorescent-labelled primer combination.

<b>Optimized Parameter</b>	<b>Variable/Fixed</b>	<b>Begin</b>	<b>End</b>	<b>Step</b>	<b>6FAM</b>	<b>VIC</b>	<b>NED</b>	<b>PET</b>
Minimum peak height (rfu)	<i>Variable</i>	50	200	50	100	150	200	200
Maximum peak width (bp)	<i>Fixed</i>	1.0	*	*	1.0	1.0	1.0	1.0
Minimum peak size (bp)	<i>Variable</i>	50	150	50	50	100	50	50
Maximum peak size (bp)	<i>Variable</i>	350	500	50	500	450	450	350
Size tolerance range (bp)	<i>Variable</i>	0.4	1.5	0.1	0.5	0.7	0.5	0.6
Minimum peak-peak distance (bp)	<i>Fixed</i>	0.0	*	*	0.0	0.0	0.0	0.0
Peak Height difference (%)	<i>Fixed</i>	0.0	*	*	0	0	0	0
Minimum allele frequency (%)	<i>Fixed</i>	1.0	*	*	1.0	1.0	1.0	1.0
Maximum allele frequency (%)	<i>Fixed</i>	99.0	*	*	99.0	99.0	99.0	99.0
Global R	*	*	*	*	0.992410	0.988047	0.984625	0.985349
Significance	*	*	*	*	0.001	0.001	0.001	0.001