

Violin No

205

Al Quarto con 1^{os} trompas, y

306

Acompañam^{to}.

al 1^{mo}.

Univ^a.



Violin 1.º al 4.º

Alleg. Mos. 3/4 *Cres*

Handwritten musical score for Violin 1.º, measures 1 to 64. The score is written on ten staves with various musical notations including notes, rests, and ornaments. Measure numbers 14, 26, 36, 49, 62, and 69 are clearly visible. The tempo is marked 'Alleg. Mos.' and the dynamics include 'Cres'.

Handwritten musical score on five staves. The notation includes various rhythmic values, accidentals, and dynamic markings such as *p* and *f*. The music is written in a historical style, possibly Baroque or Classical.

Handwritten musical score on four staves. The first staff is marked *Coplas* and *Danza*. The notation includes a treble clef, a key signature of one sharp (F#), and a 3/4 time signature. The music features a variety of rhythmic patterns and dynamic markings.

All' segno in pastor

Four empty musical staves at the bottom of the page.



Violin 2^o



Violin 2^o al 4^o

All.^o Mod.^o

Handwritten musical score for Violin 2, measures 1-14. The score is written on ten staves. The first staff begins with the tempo marking "All.^o Mod.^o" and a treble clef. The key signature has one sharp (F#) and the time signature is 3/4. The music consists of a series of rhythmic patterns, including eighth and sixteenth notes, often beamed together. There are several trills and slurs throughout. The notation is dense and characteristic of 18th-century manuscript notation. The paper shows signs of age, including some staining and a small mark on the left margin.

Caplan Despo. *Adagio*

Brio. ⁹⁰

*Allegro
poco*



UNIVERSIDAD
DE SALAMANCA
GREDOSIALES



trompa 2^a al 4^o In G. ut

Alleg^{ro} Mod.^{to} 3/4 *p* *orn* *Solo* *3*

vozp

p

15

6

p

p

p

19 *Alleg^{ro}* *3* *Alleg^{ro} impet^o*



UNIVERSIDAD
DE SALAMANCA
GRADOS USALES



Allegro al 20

Allegro mod. $\text{C}:\#3/4$ *f* *Pizz.*

Arco

f *f* *voz Pizz.*

p *Arco*

f *f*

f *f* *Pizz.*

Arco

p

Copla *Desp.* $\text{C}:\#3/4$ *f* *p* *f* *p*

f *Allegro impet.*

Arco





Comp. ar 1º *St St St* *Pizzicato*

Allegro Moderato $\text{C} \# \text{3}$

arco *vlf* *St*

26 *304* *St* 36 *Pizz* *P*

arco 47 49

60 62 69

77 84

6

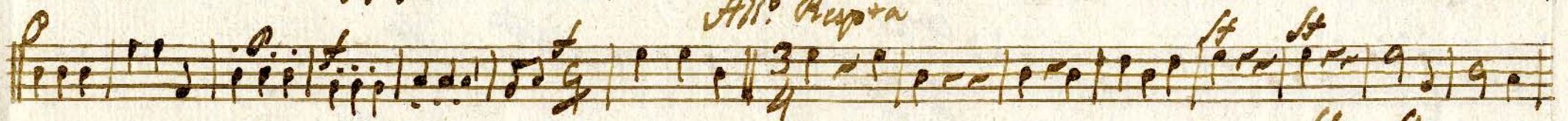
26 *Pizz* *P* *arco*

Dolce alla Capria

Cosm. D. 170.



All. Ruyra



Allegro



Allegro



triple al 4^o

20.

Ut. Mod. 2/4
 A los dulces silbos & vuestro & nuestro Pastor lle gado
 obe jitas con mucha afi cion a los dulces silbos & nuestro Pastor
 obe jitas lle gado obe jitas con mucha afi cion vamos buenos todos
 pues nos comui do pues nos comui do para un ali mento oferi do a Dios
 a Dios a Dios vamos vamos pues nos comui do comui do para un ali men
 to oferi do a Dios a los dulces silbos & vuestro & nuestro Pastor
 lle gado obe jitas con mucha afi cion a los dulces
 silbos & nuestro Pastor obe jitas lle gado obe jitas con mucha afi cion
 con mucha afi cion

Coplas Despaao

De qadobe jitas tiernas a uel mo pas

tot e ter no pas tot e ter no qen el ha lla reis del canso

Pasto sa lud i re medio sa lud yre medio qen el halla

reis del canso Pao to sa lud i re me dio

Allegro
|| 3/4 || *Allegro Volti*





Tenor al 4^o

2^o f P f P

Alleg^{ro} Mod^{erato}

A los dulces silbos & voces no de vuestro Pastor

Me gao obe Titas con mucha aficion a los dulces silbos

& voces no de vuestro Pastor obe Titas Me gao obe Titas con mucha aficion ^{Duo} queda

mante q' fino q' tierno pastor q' tierno Pastor a el cona gramis vi

da i cora zon vi day cora zon vamos vamos todos que no combi do

que no comido para un ali mento q' esto do & Dios & Dios & Dios

vamos vamos todos q' no comido para un ali mento q' esto do & Dios

A los dulces silbos & voces no de vuestro Pastor Me gao obe Ti-

tas con mucha con mucha aficion A los dulces silbos & voces no de vuestro Pastor obe Titas

Me gao obe Titas con mucha aficion con ^{Alto Pastor for lin} ^{partid}

Coplan Laray

Recip. All.

UNIVERSIDAD DE SALAMANCA GREDOS.USALES



UNIVERSIDAD
DE SALAMANCA
GREDOS SALES

