

(66)

121

Gradual y Sequentia #1766.

a. 4.º Con Violines.

# Veni Sancte Spiritus #

# Del Maestro #

# Aragues. #

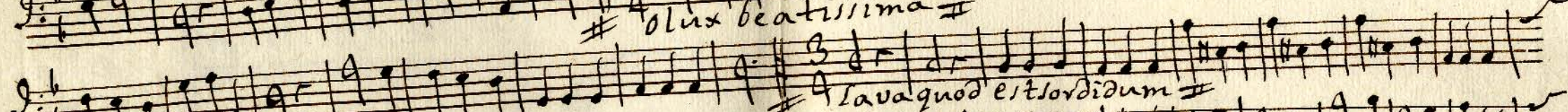
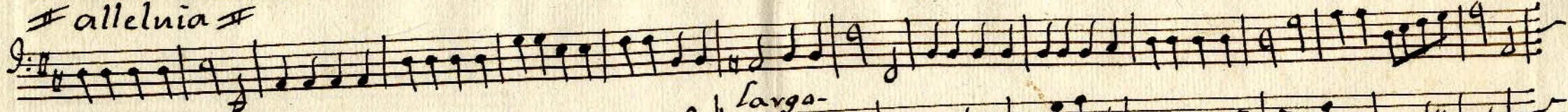


Gradual-Largo-

- Acompañamiento - a - 4º



# Alleluia #



Gradual. Largo-

Violin-1<sup>o</sup> a. 4<sup>o</sup>

Handwritten musical notation for the first system, featuring a treble clef, a key signature of one sharp (F#), and a common time signature (C). The music consists of a single melodic line with various ornaments and dynamics.

Alleluia -

Handwritten musical notation for the second system, continuing the Alleluia section with a treble clef and common time signature.

Handwritten musical notation for the third system, continuing the Alleluia section with a treble clef and common time signature.

Handwritten musical notation for the fourth system, continuing the Alleluia section with a treble clef and common time signature.

Veni Sancte spiritus -

Handwritten musical notation for the fifth system, beginning the 'Veni Sancte spiritus' section with a treble clef and common time signature.

Handwritten musical notation for the sixth system, continuing the 'Veni Sancte spiritus' section with a treble clef and common time signature.

Handwritten musical notation for the seventh system, continuing the 'Veni Sancte spiritus' section with a treble clef and common time signature.

Handwritten musical notation for the eighth system, continuing the 'Veni Sancte spiritus' section with a treble clef and common time signature.

Handwritten musical notation for the ninth system, continuing the 'Veni Sancte spiritus' section with a treble clef and common time signature.

Handwritten musical notation for the tenth system, continuing the 'Veni Sancte spiritus' section with a treble clef and common time signature.

Coniulator II Sigue a la buelta

*Alux beatissima -*

*Lava quod est sordidum -*

*Datus fidelium -*

*Da virtutis meritum -*

Gradual. Largo-

- Violin. 2<sup>o</sup> a. 4<sup>o</sup>

Handwritten musical notation for the first system, featuring a treble clef, a key signature of one sharp (F#), and a common time signature (C). The notation includes various rhythmic values, slurs, and dynamic markings such as *po* and *for*.

# alleluia-

Handwritten musical notation for the second system, continuing the piece with similar notation and dynamic markings.

Handwritten musical notation for the third system, including a treble clef and various musical notations.

Largo

# Veni sancte spiritus-

Handwritten musical notation for the fourth system, featuring a treble clef and a key signature of one flat (Bb). It includes dynamic markings like *po* and *for*.

Handwritten musical notation for the fifth system, continuing the musical piece.

Handwritten musical notation for the sixth system, including a treble clef and various musical notations.

Sequencia

Andante-

# Veni sancte spiritus-

Handwritten musical notation for the seventh system, featuring a treble clef and a key signature of one flat (Bb). It includes dynamic markings like *po* and *for*.

# Consolator #

Handwritten musical notation for the eighth system, including a treble clef and a key signature of one flat (Bb). It concludes with the instruction "Segue ala vuelta".

Handwritten musical notation on a single staff, featuring a treble clef, a key signature of one sharp (F#), and a 3/4 time signature. The notation includes various note values, rests, and bar lines.

*# Olux beatissima -*

Handwritten musical notation on a single staff, continuing the piece with a treble clef, one sharp, and 3/4 time signature.

*# Lava quod est sordidum -*

Handwritten musical notation on a single staff, continuing the piece with a treble clef, one sharp, and 3/4 time signature.

*# Datus fidelium -*

Handwritten musical notation on a single staff, continuing the piece with a treble clef, one sharp, and 3/4 time signature.

Handwritten musical notation on a single staff, continuing the piece with a treble clef, one sharp, and 3/4 time signature.

*# Davivtutis meritum #*

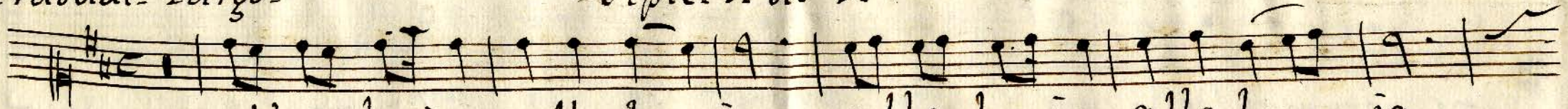
Handwritten musical notation on a single staff, continuing the piece with a treble clef, one sharp, and 3/4 time signature.

Handwritten musical notation on a single staff, continuing the piece with a treble clef, one sharp, and 3/4 time signature. The staff ends with a double bar line and a repeat sign.

Four empty musical staves at the bottom of the page.

Gradual. Largo.

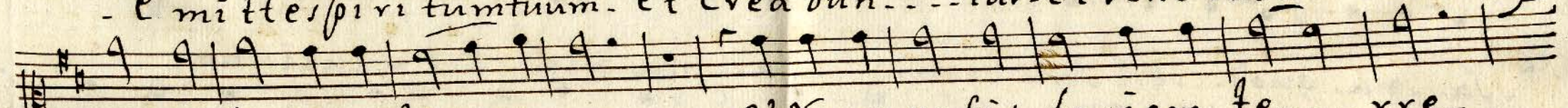
Tiple. 1.º a. 4.º



alle-luia-alle lu-ia-alle lu-ia-alle lu-ia-



- emittespiri tumtum. et Crea bun- tur. et Venovabis. et Venovabis



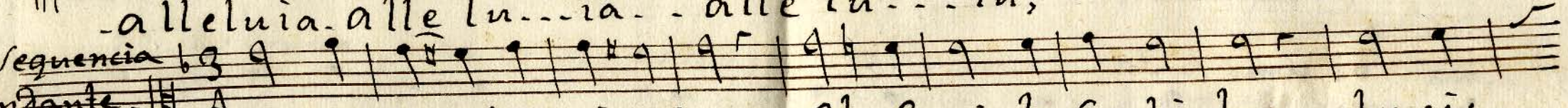
faciem. te- rre. et Venovabis. faciem. te- rre.



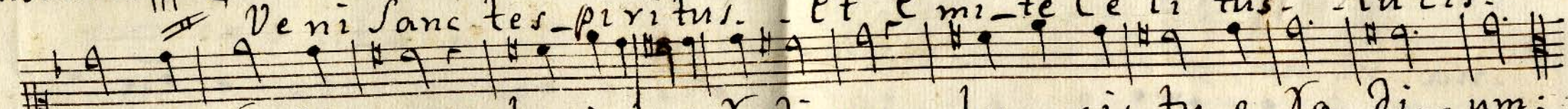
alleluia. alle lu-ia. alle lu-ia;

Sequencia

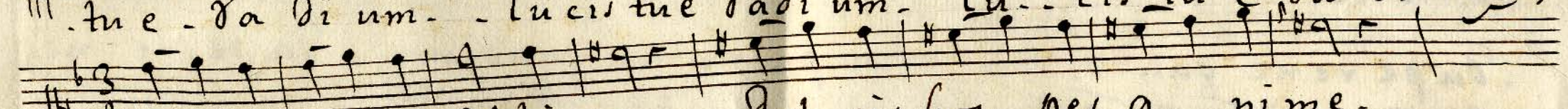
Andante.



Veni Sanc tes- piritus. et emite Ce li tus. lucis.



tu e- da di um. lucis tue Ra di um. Lu- cis tu e- da di- um;



Con so la tor Ob ti me. Dul cis hos- pes a- ni me.



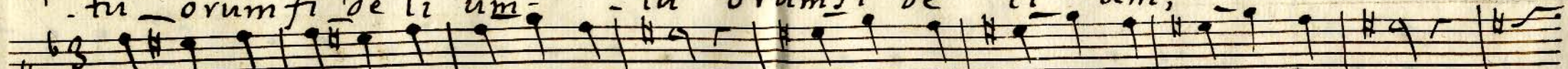
Dul ce re frige ri um. Dul ce re fri ge ri um;



O lux be a ti ssi ma. re ple Cor dis in ti ma-



- tu - orum fi de li um - tu orum fi de li um;



4 Sa... va quod est sor... di dum, - Vi... ga quod est a... vi dum,



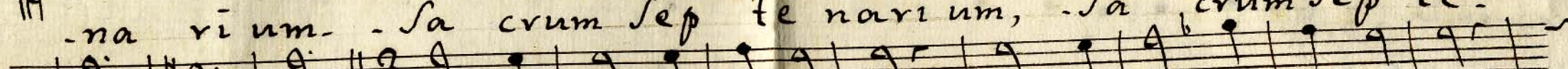
- Sa... na quod... est sau ci um, - Sa... na quod... est sauci... um;



4 Da... tuis fi de li bus, - In te Confi denti bus, - Sacrum septe-



- na ri um - Sa crum sep te na ri um, - Sa crum sep te -



- na ri um; 4 Da Vir tu tis me ri tum, - Da Sa lu tis exi tum,



- Da pe re ne gau di um, - Da pe re ne gau di um, - Da pe re ne -



- gau di um, - a... men. - al... le... lu... ia; //

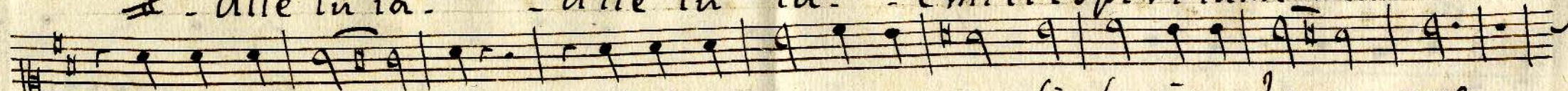


Gradual. Largo.

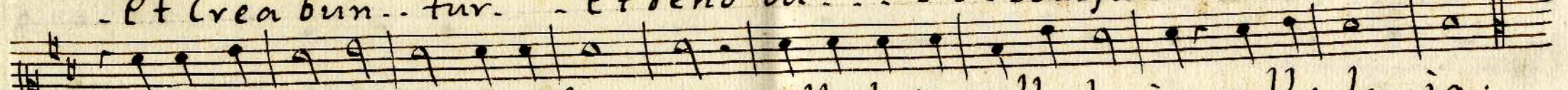
- Tiple. 2<sup>a</sup>. 4<sup>o</sup>.



- alle lu ia. - alle lu ia. - Emittes spiritum tuum.



- Et creabun... tur. - Et reno va... bis faciem te... rre.



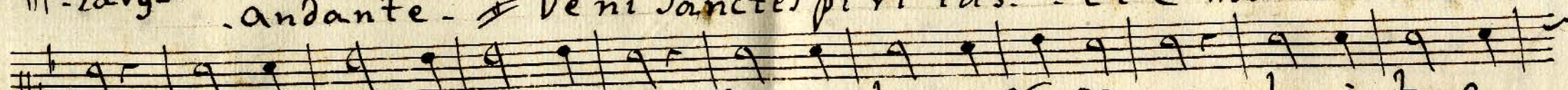
- Et reno vabis faciem te rre. alle lu ia alle lu ia. alle lu ia;



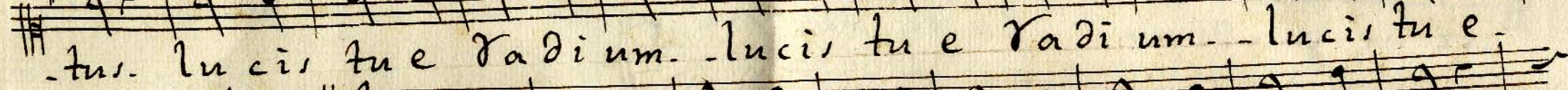
Sequenzia

- Largo.

- Andante.



- Veni sancte spiritus. - Et emitte celi.



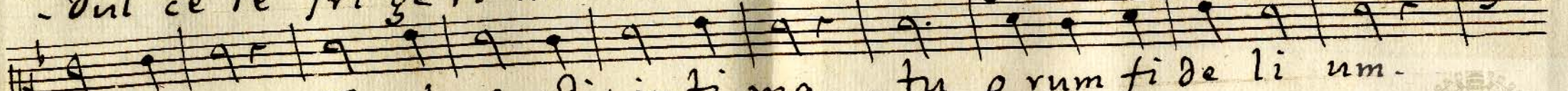
- tus. lucis tu e Radium. - lucis tu e Radium. - lucis tu e



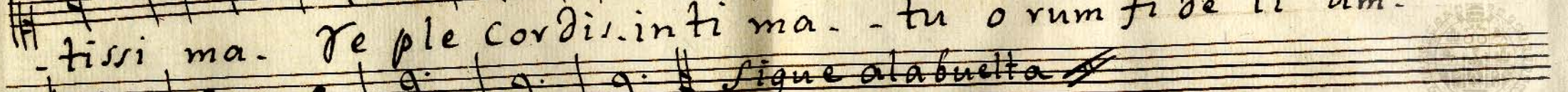
- Radium; Conso lator obti me. - Dulcis ho, per a ni me.



- Dul ce re fri ge ri um. - Dul ce re fri ge ri um; O lux bea.



- tissi ma. Re ple cordis inti ma. - tu o rum fi de li um.



Signe alabuelta



- tu o rum fi de li um;

Sa na quod est Sauci um, . Sa na quod est Sauci um;  
Da... . tu is fi de li bus, - Yn te Con fi den ti bus, - Sacrum Sep te -  
na ri um, . Sacrum Sep te na ri um, . Sacrum Sep te na ri um;  
Da Vir tu tis me ri tum, - Da Sa lu tis Exi tum, - Da pe -  
re ne gau di um, - Da pe re ne gau di um, - Da pe re ne -  
gau di um, . a... men, - al.. le.. lu.. ia; #

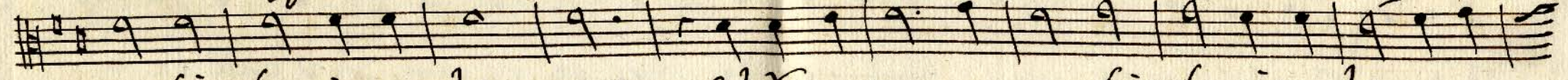
Gradual. Largo - Alto. a. 4<sup>a</sup>.



alle-lu ia. alle lu... ia. alle lu ia. alle lu ia.



- Emitte spi ritum tuum. - Et Cre a bun. tur. Et re no va bis. Et re no.



- va bis faci em. te. - rre. - et re no va. - - - - - bis. faci em. te. - - - - -



- rre. - alle lu ia alle lu... ia. alle lu... ia;



Solo. Largo. Ve. ni. Sanc. - - - - - tes pi. - - ri. - tur, Veni.



- Sancte Sancte spi - - ri - tur, - de - ple tu. - - - - -



- o. - - - - - rum Cor da fi. - de. - li - um, et tu. - i, a. - - - - - moris in.



- e is. ig. - nem ac cen. - - - - - de, - ig nem ac ce - - - - - n. - de;



Sequencia Andante. Ve ni Sanc te spi ri tus. - et e mi te Ce li tus.

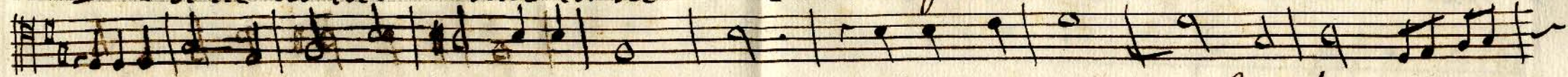
- lucis tu e Ra di um, - lu cis tu e Ra di um, - lu cis tu e Ra di um.  
 - di um; Con so la tor ob ti me, - Dul cis ho i pes a ni me.  
 - Dul ce re fri ge ri um, - Dul ce re fri ge ri um; O lux be a ti  
 - ssima, - Re ple Cordis in ti ma, - tu orum fi de li um, - tu  
 - orum fi de li um; Sa va quod est sor di dum, - Ri ga quod est  
 - a ri dum, Sa na quod est Saucium, - Sa na quod est Saucium;  
 - Da... tu is fi de li bus, - yn te Con fi denti bus, Sacrum Sep te  
 - na ri um - Sa crum Sep te na ri um, - Sa crum Sep te na ri um;  
 Da Vir tu ti, me ri tum, - Da Sa lu ti, exi tum, - Da pe re ne.

Gradual. Largo.

- Tenor. a. 4<sup>o</sup>.



Alle lu ia. - alle lu ia. - emitte spiritum tu um. - et Creabuntur.



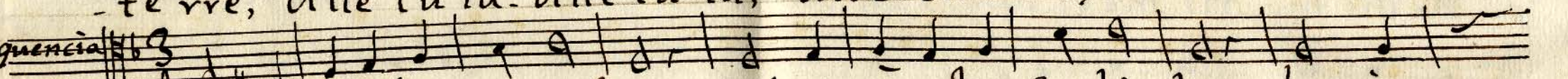
- et reno va... bis faciem. te. rre, - et reno va... bis. fa ci em.



- te rre, alle lu ia. alle lu ia, alle lu ia; -Largo.

Sequencia

Andante.



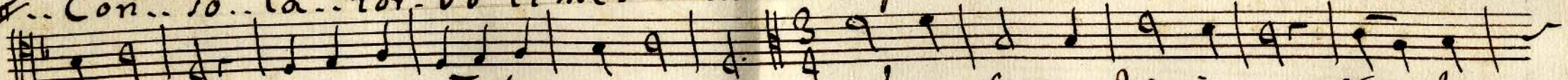
Ve ni san ctes pi ri tus. - et e mi te ce li tus. lu cis



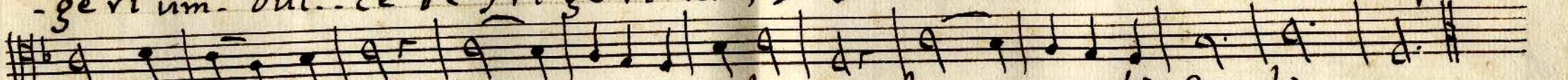
- tue Ra di um. lu cis tu. e. Ra di um, lu cis tu e Ra di um;



Con. so. la. tor. Ob time. - Dulcis. ho sper. a... ni me. - Dul. ce. re... fri.



- ge ri um. Dul. ce re fri ge ri um; O lux bea tissi ma. re ple.



- cordis. in ti ma. tu... orum fi de li um. tu... orum fi de li um;



Sa na quod. est sau ci um, Sa. na quod est sau ci um;



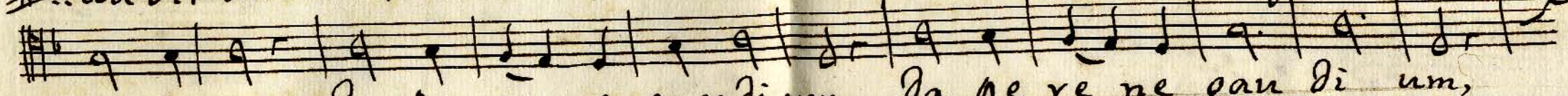
Da... tu i, fi de li bus, - In te Con fi den ti bus, - Sacrum. Septe-



- narium, - Sacrum septe na ri um, Sacrum septe na ri um;



Da Vir tu... ti, me ri tum, - Da Sa lu ti, Exi tum, - Da pe re ne-



- gaudium, - Da pe re ne gau di um, - Da pe re ne gau di um,



- amen, - al... le... lu... ia; //



Gradual. Largo-

- Baxo-2º Choro-

*♯* - alle lu..ia *♯*

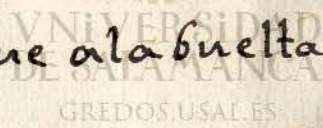
sequencia  
andante.

*♯* 4 Veni sancte spiri..tus *♯*

*♯* Con so la..tor. ob..time *♯*

*♯* O lux bea..ti ssi..ma *♯*

*♯* Sigue a la buelta





8.  
Sa... na quod est saucium



Da... tui, fi deli bui



Da Vir tu... ti, meri... tum



- a... men - al... le... lu... ia;

