

+

136

Villancico ad. al Santissimo

con Violines y Compas

Suenen el Clarin

Mzo

D.ⁿ Felipe Prast.



Handwritten musical score on aged paper, consisting of 14 staves. The notation includes various rhythmic values, accidentals, and dynamic markings. The first staff begins with a treble clef and a key signature of one sharp (F#). The score is divided into sections by clef changes and dynamic markings. The word "Capo" is written above the 9th staff, and "Allo Basso" is written above the 10th staff. The notation is dense, featuring many sixteenth and thirty-second notes, often beamed together. There are some annotations above the notes, such as "3/4" and "3/8". The paper shows signs of age, including foxing and staining.

Violino f

A handwritten musical score for violin, consisting of ten staves of music. The notation is in treble clef with a key signature of one sharp (F#) and a 3/4 time signature. The music is written in a cursive, historical style. The first staff begins with a treble clef, a key signature of one sharp, and a 3/4 time signature. The notation includes various note values, rests, and dynamic markings. The score is densely written with many notes and rests, indicating a complex and technically demanding piece. The paper shows signs of age, with some staining and discoloration.

Solti Coplar.



UNIVERSIDAD DE SALAMANCA

GEDOS.USALES

Handwritten musical score on six staves. The notation includes treble clefs, a key signature of one sharp (F#), and a common time signature (C). The music features a variety of note values, including eighth and sixteenth notes, and rests. The manuscript shows signs of age, with some ink bleed-through from the reverse side and a small brown stain in the upper left corner.

80th Copy

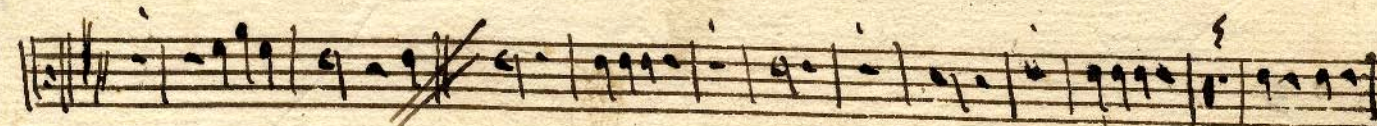
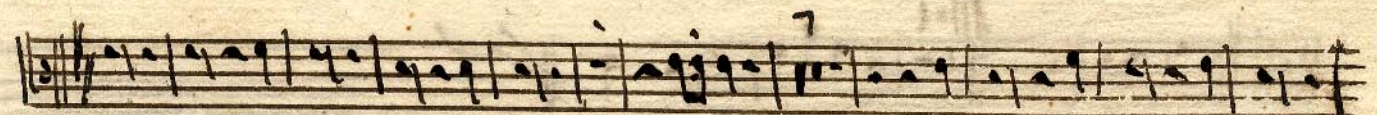
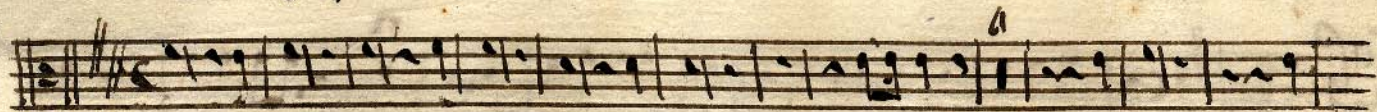
Violino 2^o

Handwritten musical score for Violino 2, consisting of ten staves of music. The notation includes various musical symbols such as notes, rests, and dynamic markings. The score is written in G major and 3/4 time. The music features a variety of rhythmic patterns, including eighth and sixteenth notes, and rests. The score concludes with the marking "al Segno".

Dynamic markings include *Cresc.* and *al Segno*.

Corno I^o

120



Cap.
Andte

allegro



UNIVERSIDAD
DE SALAMANCA

GEDOS'USAL ES

Corno 2^o

f

1

Handwritten musical score for Corno 2^o, consisting of seven staves of music. The notation includes various notes, rests, and dynamic markings. The first staff begins with a treble clef, a key signature of two sharps (F# and C#), and a common time signature (C). The music is written in a cursive, handwritten style. There are several annotations: a large 'f' at the top center, a '1' at the top right, a '2' above the third staff, a '6' above the fourth staff, and a '5' above the sixth staff. The word 'Volta' is written in the final staff. The paper shows signs of age, including yellowing and some staining.



"S. 00302"

Cap
M^o

allegro



UNIVERSIDAD
 DE SALAMANCA

GREDOS.USAL.ES

Vayon aia

Handwritten musical notation on a five-line staff, starting with a treble clef and a key signature of two sharps (F# and C#). The notation includes a series of rhythmic patterns and notes. A handwritten number '20' is written below the staff.

Handwritten musical notation on a five-line staff, continuing the piece. The notation features various note values and rests. A handwritten number '21' is written below the staff.

Handwritten musical notation on a five-line staff, continuing the piece. The notation includes a variety of rhythmic figures and melodic lines.

Handwritten musical notation on a five-line staff, continuing the piece. The notation shows a steady flow of notes and rests.

Handwritten musical notation on a five-line staff, continuing the piece. The notation includes a double bar line and a sharp sign indicating a key change.

Handwritten musical notation on a five-line staff, continuing the piece. The notation features a complex rhythmic pattern. A handwritten number '22' is written above the staff.

Handwritten musical notation on a five-line staff, continuing the piece. The notation includes a variety of note values and rests. A handwritten number '23' is written below the staff.

Handwritten text at the bottom left of the page, possibly indicating the end of the manuscript or a specific instruction.



23

AS NO 1947

Op. 1
 And^{te}
 allegro



UNIVERSIDAD
 DE SALAMANCA

GRUPO 15

Acompañam^{to} Al Cuatro Suenan el Clarin^o Maestro Piaz^o

A handwritten musical score for Clarinet, consisting of ten staves. The notation is in a single system with a treble clef and a key signature of one flat (B-flat). The music features a variety of rhythmic patterns, including eighth and sixteenth notes, and rests. There are several dynamic markings, including *Allegro* and *All. viv.*. A section of the score is crossed out with heavy black ink. The manuscript is written in dark ink on aged, slightly yellowed paper.

Tiple da

+

All^o

20 Suenen el clarin to quen el timbal fuentes a como med
ay res a oi ran quel e tu no vien Au tor Gene ral O y en Blanca d
ble a a to do se da se da se da O y en Blanca d ble a a
to do se da sea los chris tianos Do ma que pa sa e pan la
flos a sea carne y san gre el vi no en la transus tan cia cion
a sea carne y san gre el vi no en la transus tan cia cion
Suenen el clarin a plau dan el fa bor el fa bor
quoy a los mor za les da su cri a bor da su cri a bor
su cuer po su san gre so lo por su amor su cuer po su san gre
so lo por su amor su amor su amor su cuer po su san gre so lo por su amor

Cap. 2^o u^o 4
And



1^a Ve vi da so lo y vi an da La car ne y la san gre
2^a Ho le par tel que le co me sin que brani di vi
3^a v no le re ci be y mil, quan to lle va a fa
4^a Los vuenos co molos malos Re ci ben la comu



1 son y la carne son Pe ro Chris to to dose queda se queda
2 sion ~~si~~ di vi sion A Chris to en te ro se lleva se lleva
3 bor lleva a fa bor los mil, tanto llevar y no el v no
4 nion la comu nion Pe ro con a si qual suate suate



1 En v na y o ha obla cion En v na y o ha obla cion, suene el clarin &
2 a quel que le re ci bio a quel que le re ci bio, suene el clarin &
3 ni co mi do se pas to ni co mi do se pas to, suene el clarin &
4 a vi da ñ mortal ho nor a vi da ñ mortal ho nor, suene el clarin &

Mto ad

+

2o suenen el clarin to quen el tim bal to quen to quen suentes a
 xix ay ay a gi rar quel e liz no vien au bor gene ral oy en
 plancaoble a a to do se da se da se da oy en plan cao
 ble a a to do se da da sea los christianos docma que
 pa sa el pan la flor a sea car ney san gre el vi no el
 vi no en la tran sus tan cia cion a sea car ney san gre el
 vi no en la tran sus tan cia cion su nen el cla rin a
 Plaudan el fa bor el fa bor que loy a los mor za les da su
 cri a dor da su cri a dor su cu l po su san gre so lo
 por sua mor su cu l po su san gre so lo por sua mor sua mor sua





mor su cui no su san ou fo lo por su amor



And^{te} ²³ suenen el cla *im.* *allegro*



2a suene el cla rin ve suene toquen el timbal fuentes a co rre



ay tu a or rar quel e ter no vien du tor de ne tal de ne tal



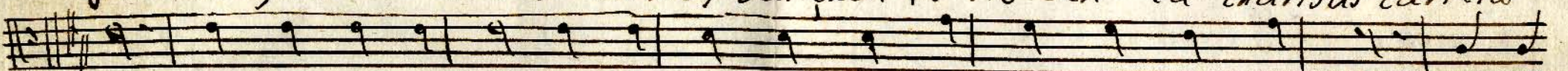
oy en planca o ble a a to do se da se da se da oy en planca o



ble a a to do se da da sea los Mor ta lu dog ma que pasa e



pan la flor a ser car ne y san gre el vi no en la transus tan cia



cion a ser car ne y san gre el vi no en la transus tan cia cion suenen



el cla rin et plaudan el fa bor el fa bor que o y a los Mor



ta lu da su cia a do r da su cia a do r su cuer po su san gre



so lo por sua mor por sua mor su cuer po su san gre so lo por sua mor sua



12 mor sua mor su cuer po su san gre so lo por sua mor.



1^a Ve vi da so lo y vi an da la car nos la san gre
 2^a Ho le par tel que le co me sin quiebra ni di vi
 3^a V no le ve ci be y mil quan to lle ba & fa
 4^a Los ve nos co mo los malos Re ci ben la comu



1^a son 3 Pe ro chris to so lo se que da en v na
 2^a sion A chris to en te ro se lleva a quel que le
 3^a bor los mil tanto lle ba el v no ni co mi do
 4^a mion Pe ro con & si qual suerte & vi da o mor



1^a ha obla cion en v na Yo ha obla cion. Suenen el cla rin
 2^a Re ci bio a quel que le ve ci vio. Suenen
 3^a se pas to ni co mi do se pas to. Suenen al segno
 4^a tal o mor & vi da o mor tal o mor. Suenen



Vayo a A

+

Suenen el Clarin to quen el timbal fuentes a co rra ay res
 a pi ra quel e za no vien av toz gene ral gene ral oy en
 Blancaoble a a to dos se da se da se da se da oy en Blancaoble a a
 to dos se da se da sea los chris tianos dogma que pa sa el Pan la
 flor a sea car ne y san que el vi no el vi no en la transus
 tancia cion a sea car ne y san que el vi no en la transustancia
 cion suenen el clarin a. Plav dan el fa bor el fa bor quoy a
 los Mor ta les da su cri a dor da su cri a dor su cuerpo su
 san que so lo por su amor su amor su cuerpo su san que
 so lo por su amor su amor su amor su san que su cuerpo so lo por su amor

Handwritten musical notation on a single staff, including a treble clef, a key signature of one sharp (F#), and a common time signature (C). The notation includes a fermata over a note, followed by a double bar line and a repeat sign. The piece concludes with a double bar line and a fermata.

mor.

Suene el clarin

allegro

